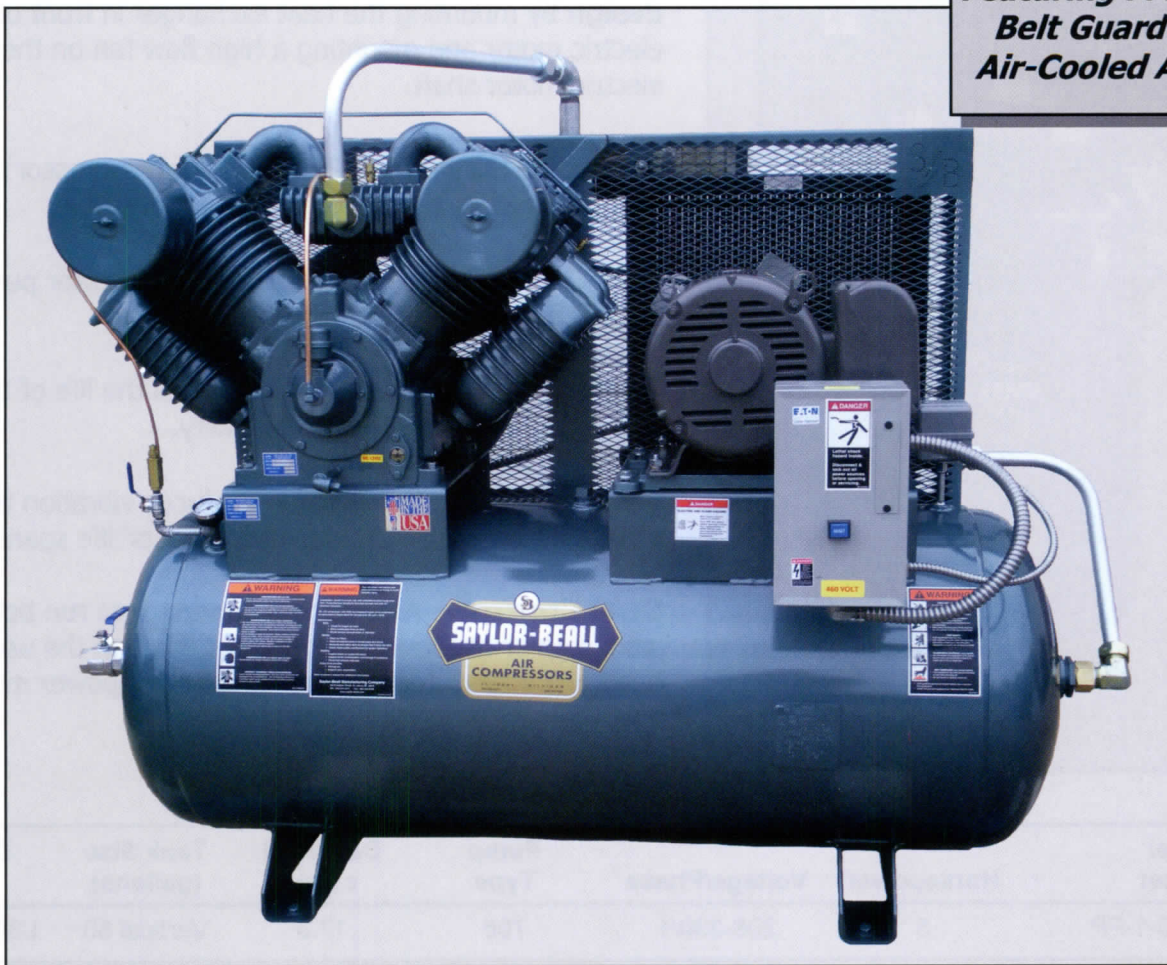


SAYLOR-BEALL

Performance Package

Featuring . . .
*Belt Guard Mounted
Air-Cooled Aftercooler*



Model 92520-FP

Air-Cooled Aftercooler

Incorporates a **unique design** by mounting the heat exchanger in front of the electric motor and mounting a high flow fan on the electric motor shaft.

Since air flow over the compressor is not blocked, the **compressor runs cooler** than with other currently available belt guard mounted after-coolers.



Aftercooler Assembly



Features of Package:

Air-Cooled Aftercooler—Incorporates a **unique design** by mounting the heat exchanger in front of the electric motor and mounting a high flow fan on the electric motor shaft.

Magnetic Starter — Protects your compressor's electrical system by preventing motor overload.

Low Oil Control— Protects your compressor pump from damage due to lack of lubrication.

Automatic Tank Drain— Increases the life of the tank and the compressed air's quality.

Vibration Isolator Pads— Reduces vibration thereby increasing other compressor components' life spans.

Dual Control— Allows the compressor to run both in start/stop or continuous run modes through the use of head unloaders. Included on 15-30 horsepower models only.

Model Number	Horsepower	Voltage/Phase	Pump Type	Delivered c.f.m.	Tank Size (gallons)	Dimensions (inches)
VT-735-80-1-FP	5	208-230/1	705	17.3	Vertical 80	L34 x W29 x H74
735-80-1-FP	5	208-230/1	705	17.3	Horizontal 80	L63 x W21 x H47
VT-735-80-3-FP	5	208-230-460/3	705	17.3	Vertical 80	L34 x W29 x H74
735-80-3-FP	5	208-230-460/3	705	17.3	Horizontal 80	L63 x W21 x H47
745-80-3-FP	7 1/2	208-230-460/3	707	26.9	Horizontal 80	L63 x W21 x H47
VT-755-120-3-FP	10	208-230-460/3	707	34.4	Vertical 120	L44 x W30 x H75
755-120-3-FP	10	208-230-460/3	707	34.4	Horizontal 120	L69 x W24 x H51
451512-FP	15	208-230-460/3	4500	51.0	Horizontal 120	L75 x W29 x H58
92012-FP	20	208-230-460/3	9000	76.1	Horizontal 120	L79 x W29 x H56
92520-FP	25	208-230-460/3	9000	89.6	Horizontal 200	L78 x W30 x H63
93024-FP	30	208-230-460/3	9000	101.1	Horizontal 240	L85 x W30 x H63

**Saylor-Beall Mfg. Co., 400 N. Kibbee St., P.O. Box 40, St. Johns, MI 48879
ph. 800-248-9001, fax 989-224-8788, www.saylor-beall.com**