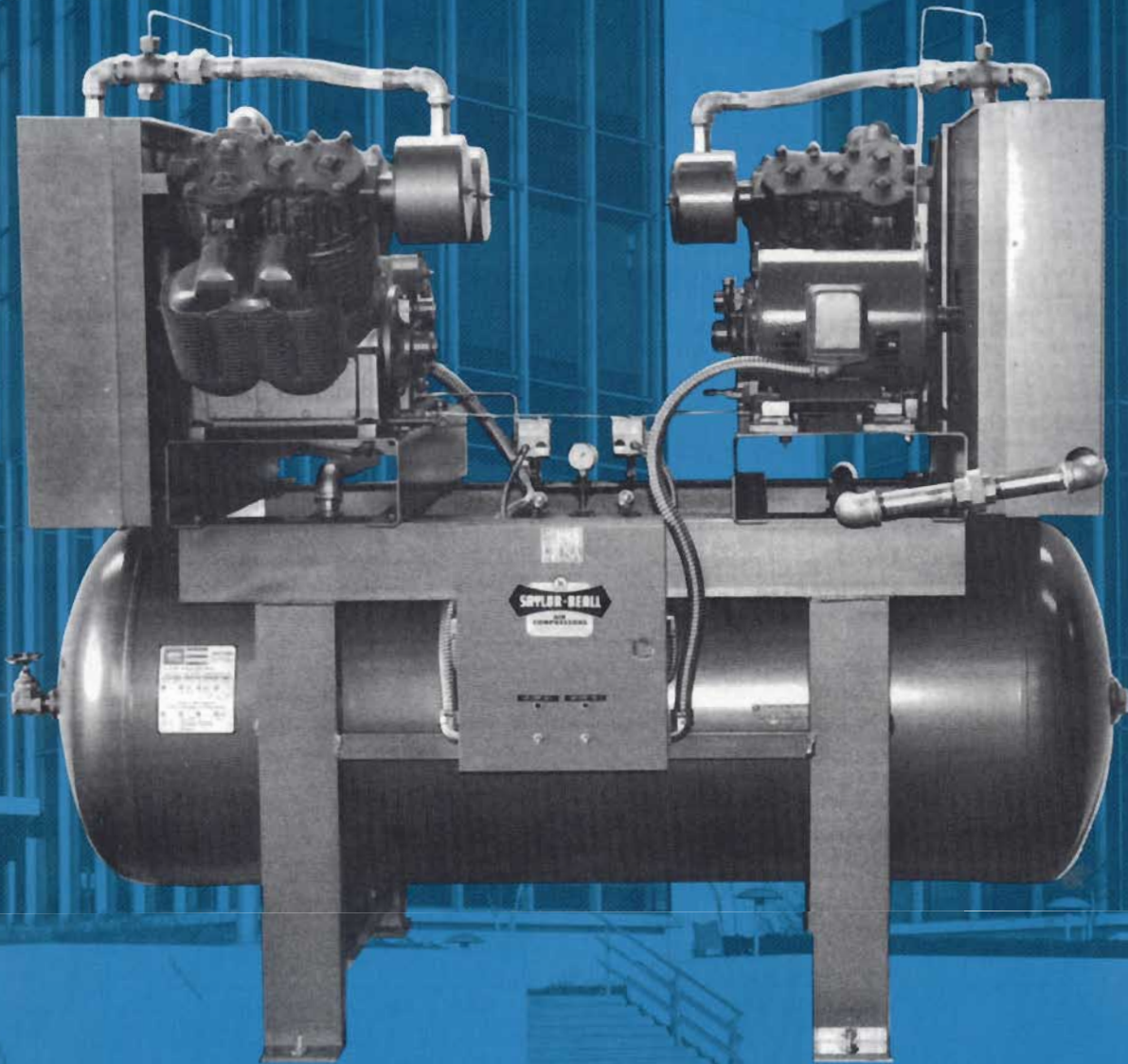


SAYLOR-BEALL'S INDUSTRIAL TWO-STAGE/DUPLEX AIR COMPRESSORS



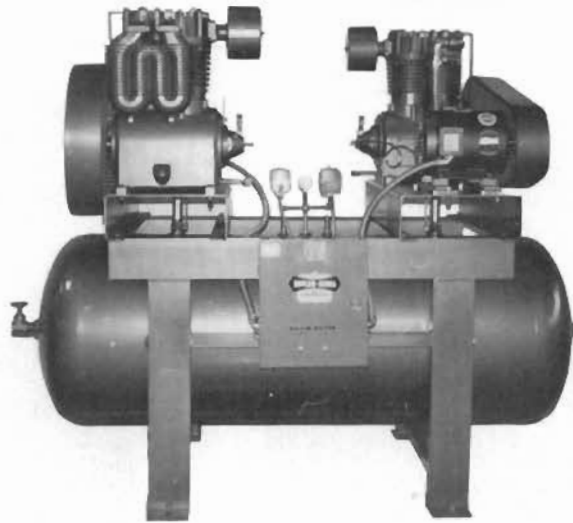
SAYLOR-BEALL MANUFACTURING COMPANY
P.O. BOX 40, 400 KIBBEE STREET, ST. JOHNS, MICHIGAN 48879
1-800-248-9001 (517) 224-8788 (FAX)

Manufacturers of Air Compressors since 1915





SAYLOR-BEALL



SPLASH OR PRESSURE LUBRICATED

Saylor-Beall duplex units, use two basic compressors and two motor assemblies. Utilizing the proper magnetic starters and alternator control provides alternating single operation or dual unit operation.

SPLASH LUBRICATED MODELS

Two Cylinder Pumps

X451520
X451524
X451020
X451024

Four Cylinder Pumps

X91520
X91524
X92020
X92024
X92520
X92524
X93020
X93024

AMERICAN MADE CAST IRON COMPRESSORS

STANDARD EQUIPMENT:

Electric Motors — nationally known brands, dual voltage, open drip-proof type. Includes multiple belts and V-drive sheaves. 1725 rpm.

Air Tanks — ASME, National Board Code approved, 200 psi working pressure. All units have tank drains and service valves.

Compressor Pump — includes cast iron construction, oil sight gauge, flywheel with V-grooves, and intake filter/silencer.

Start-Stop Controls — pressure switch set at 140-175 psi.

Air Gauge — 0-300 psi range.

Safety Valves — ASME approved.

All units are painted and tested at the factory before shipment.

Fabricated Steel Structure — supports weight of compressors and motors, removing stress from air receiver.

Alternator control panel with magnetic starters.

HORIZONTAL UNITS — ELECTRIC POWERED*

MOTOR HORSE POWER	TANK CAP. GAL.	SPLASH LUBRICATED MODEL	SPLASH LUBRICATED PUMP	PRESSURE LUBRICATED MODEL	PRESSURE LUBRICATED PUMP	— 100 PSI RATING —			— 175 PSI RATING —			DIMENSIONS IN. L X W	BOLT DOWN IN.	APPROX. SHIPPING WT. LBS.
						RPM	CFM DISPL.	CFM DELVD. ††	RPM	CFM DISPL.	CFM DELVD. ††			
(2) 10	200	X-451020	(2) 4500	X-PL-451020	(2) PL-4500	665	102.0	83.6	605	92.8	76.0	77x52x76	41x41	2465
	240	X-451024	(2) 4500	X-PL-451024	(2) PL-4500	665	102.0	83.6	605	92.8	76.0	90x59x76	41x41	2700
(2) 15	200	X-451520	(2) 4500	X-PL-451520	(2) PL-4500	830	127.4	104.4	830	127.4	102.0	77x52x76	41x41	2533
	240	X-451524	(2) 4500	X-PL-451524	(2) PL-4500	830	127.4	104.4	830	127.4	102.0	90x59x76	41x41	2768
(2) 20	200	X-91520	(2) 9000	X-PL-91520	(2) PL-9000	550	168.8	144.2	480	147.4	122.4	77x68x73	41x41	3099
	240	X-91524	(2) 9000	X-PL-91524	(2) PL-9000	550	168.8	144.2	480	147.4	122.4	90x68x73	41x41	3334
(2) 25	200	X-92020	(2) 9000	X-PL-92020	(2) PL-9000	665	204.2	172.2	605	185.6	152.2	77x68x73	41x41	3239
	240	X-92024	(2) 9000	X-PL-92024	(2) PL-9000	665	204.2	172.2	605	185.6	152.2	90x68x73	41x41	3474
(2) 30	200	X-92520	(2) 9000	X-PL-92520	(2) PL-9000	780	239.4	203.2	710	218.0	179.2	77x68x73	41x41	3349
	240	X-92524	(2) 9000	X-PL-92524	(2) PL-9000	780	239.4	203.2	710	218.0	179.2	90x68x73	41x41	3574
(2) 30	200	X-93020	(2) 9000	X-PL-93020	(2) PL-9000	830	255.0	209.0	830	255.0	202.2	77x68x73	41x41	3539
	240	X-93024	(2) 9000	X-PL-93024	(2) PL-9000	830	255.0	209.0	830	255.0	202.2	90x68x73	41x41	3774

Alternators and Starters are not factory installed.

OPTIONAL EQUIPMENT AVAILABLE

Air Cooled After Coolers
Automatic Tank Drains
Line Filters
Moisture Traps
Oil Bath Air Filters

Pressure Regulators
Vibration Isolators
Water Cooled Aftercoolers
Low Oil Control
Refrigerated Air Dryers

††These figures represent the total delivery of two compressors at peak load. Only one-half the total is delivered during the alternating cycles.

WARRANTY

Saylor-Beall Manufacturing Company warrants its compressors and parts when properly installed and lubricated as recommended and in accordance with good industry practice to be free from defects in material and workmanship under normal use and service. The responsibility of the Company under this warranty is limited to repair or replacement, at the Company's factory, any compressor or part thereof, which shall, within one year after date of shipment to the original purchaser, be returned to the company and which, upon examination, shall be found to be defective to the satisfaction of the Company. This warranty shall not apply to compressors or parts which have been subjected to misapplication, misuse, negligence or accident, to compressors or parts which have been repaired or tampered with outside of the Company's factory when in the judgment of the Company, it appears that the reliability or stability of the compressor or part has been effected. Ordinary maintenance, such as adjustment and cleaning of equipment or components is the responsibility of the owner. All transportation and shipping charges shall be paid by purchaser. This warranty does not apply to electric motors or gasoline engines. These are covered by the Original Manufacturer's Warranty and should be returned by the purchaser to their authorized station for service. This warranty is expressly in lieu of all other warranties (except of title) expressed or implied and of any other obligations or liability on the part of the Company. There are no warranties of merchantability or of fitness for a particular purpose.