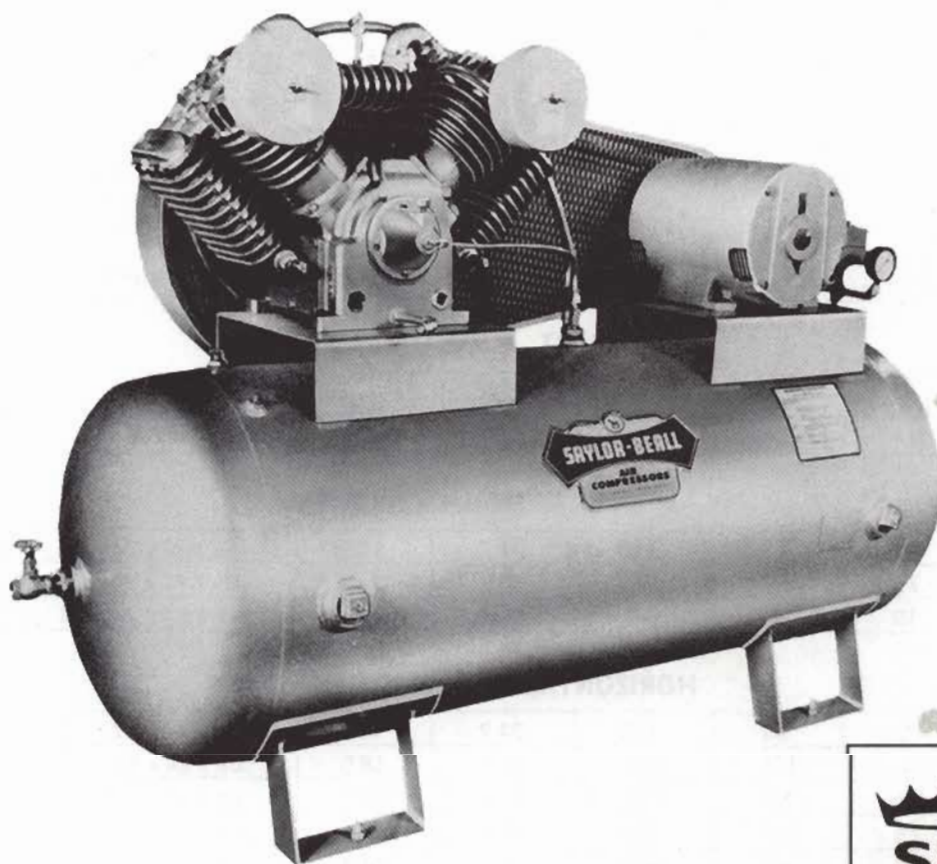


# SAYLOR-BEALL

## 707 SERIES AIR COMPRESSORS

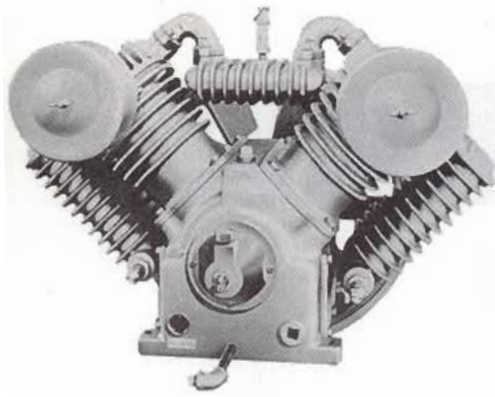


**Saylor-Beall Manufacturing Company**

P.O. Box 40, 400 N. Kibbee St., St. Johns, MI 48879

1-800-248-9001 (USA) 517-224-2371 (MICH) 517-224-8788 (FAX)

*Manufacturers of Air Compressors since 1915*



## FEATURES

- CYLINDER HEAD** — Finned Cast Iron — Valves Serviceable from Top
- CYLINDERS** — Finned Cast Iron — Precision Honed
- INTERCOOLERS** — Sturdy Finned Cast Iron (With Safety Valves)
- CRANKSHAFT** — Cast Meehanite — Ground and Polished
- CONNECTING RODS** — With Replaceable Precision Type Automotive Inserts — Crank End  
Replaceable Needle Bearings — Wrist Pin End
- PISTONS** — L.P. Aluminum — H.P. Cast Iron
- PISTON RINGS** — Three Compression - One Oil
- CENTRIFUGAL UNLOADER** — No Load Start
- LUBRICATION** — Splash Type (Also Available With Pressure Lubrication)

## SPECIFICATIONS — 707 BASIC AIR COMPRESSOR — TWO STAGE — 4 CYLINDER

Bore - L.P. ....	4 1/8" (2)	Flywheel O.D. ....	16 3/4"
H.P. ....	2 1/8" (2)	V-Belts - No. and Section .....	2-B
Stroke .....	3 1/2"	Basic Compressor	
CFM/Rev. ....	.054	Weight - Dry, Lbs. ....	298
Oil Capacity - Pts. ....	3 1/2"	Width .....	27
Air Filter - No. ....	2	Length .....	21
Type .....	Dry	Height .....	18
Openings - N.P.T.		Max. Press. (P.S.I.) .....	200
Suction .....	1" (2)	Optional Equipment	
Discharge .....	3/4"	Oil Bath Air Cleaners	
		Constant Speed - Discharge Unloader	

## START - STOP OPERATION

Model No.	Motor H.P.	ASME N.B. Tank Cap. (Gals.)	175 P.S.I. SPECIFICATIONS			Overall Dimensions L x W x H	Bolt Down L x W	Net Wt. Lb. (Approx.)
			Pump R.P.M.	C.F.M. Displ.	C.F.M. Del'y.			

### BASE MOUNTED UNITS

B707-5	5	—	455	24.7	18.5	43 x 23 x 24	28 x 16 1/2	505
B707-7	7 1/2	—	650	35.0	26.2	43 x 23 x 24	28 x 16 1/2	511
B707-10	10	—	845	46.0	34.4	43 x 23 x 24	28 x 16 1/2	531

### HORIZONTAL TANK MOUNTED UNITS

737-80	5	80	455	24.7	18.5	63 x 23 x 47	40 x 19	704
737-120	5	120	455	24.7	18.5	69 x 24 x 51	40 x 19	832
745-80	7 1/2	80	650	35.0	26.2	63 x 23 x 47	40 x 19	710
745-120	7 1/2	120	650	35.0	26.2	69 x 24 x 51	40 x 19	837
755-80	10	80	845	46.0	34.4	63 x 23 x 47	40 x 19	730
755-120	10	120	845	46.0	34.4	69 x 24 x 51	40 x 19	851

### VERTICAL TANK MOUNTED UNITS

VT-737-120	5	120	455	24.7	18.5	44 x 30 x 75	25 1/2 x 25 1/2	890
VT-745-120	7 1/2	120	650	35.0	26.2	44 x 30 x 75	25 1/2 x 25 1/2	896
VT-755-120	10	120	845	46.0	34.4	44 x 30 x 75	25 1/2 x 25 1/2	916

## WARRANTY

SAYLOR-BEALL Manufacturing Company warrants its compressors and parts when properly installed, lubricated and maintained as recommended and in accordance with good industry practice to be free from defects in material and workmanship under normal use and service. The responsibility of the Company under this warranty is limited to repair or replacement, at the Company's factory, any compressor or part thereof, which shall, within one year after date of shipment to the original purchaser, be returned to the company and which, upon examination, shall be found to be defective to the satisfaction of the Company. This warranty shall not apply to compressors or parts which have been subjected to misapplication, misuse, negligence or accident, to compressors or parts which have been repaired or tampered with outside the Company's factory when in the judgment of the Company, it appears that the reliability or stability of the compressor or part has been effected. Ordinary maintenance, such as adjustment and cleaning of equipment or components is the responsibility of the owner. All transportation and shipping charges shall be paid by purchaser. This warranty does not apply to electric motors or gasoline engines. These are covered by the Original Manufacturer's Warranty and should be returned by the purchaser to their authorized station for service. This warranty is expressly in lieu of all other warranties (except of title) expressed or implied and of any other obligations or liability on the part of the Company. There are no warranties of merchantability or of fitness for a particular purpose.