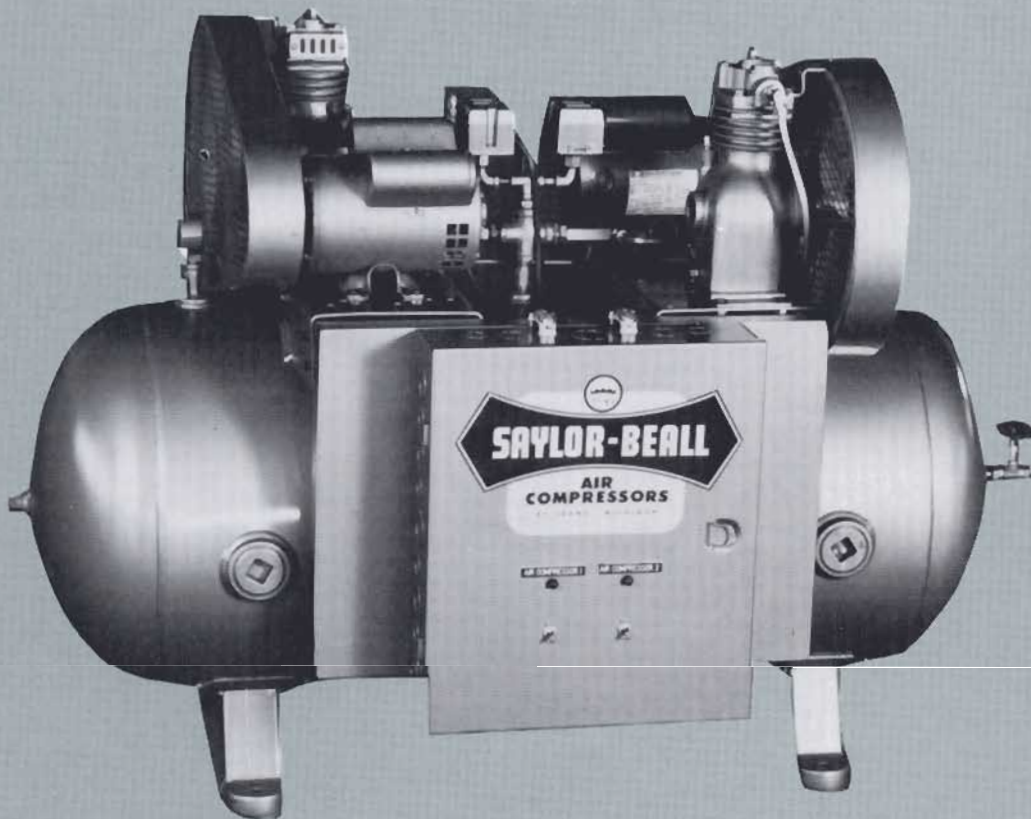


# SAYLOR-BEALL

INDUSTRIAL QUALITY  
CLIMATE CONTROL AIR COMPRESSORS



For Pneumatically Operated Climate & Instrument Control Equipment

# Saylor-Beall Climate Control

Modern pneumatically operated climate and instrument control systems demand the very best from a compressed air supply. **SAYLOR-BEALL's** many years of compressor experience has resulted in a line of climate control air compressors that meet the high levels of performance and quality customers have come to expect. **SAYLOR-BEALL CLIMATE CONTROL AIR COMPRESSORS** provide the reliable, efficient and economical operation needed to keep pneumatic systems operating at peak performance.

Every **SAYLOR-BEALL** compressor has cast iron industrial quality construction giving longer compressor life; high operating efficiency (cfm/hp) resulting in lower utility costs; and easily serviced design reducing maintenance costs.

## SINGLE-STAGE PUMP SPECIFICATIONS

- \* Cast iron construction
- \* Disc type valves accessible without removing the head.
- \* Heavy duty needle main bearings.
- \* High flow flywheel.
- \* Integral one-piece crankcase/cylinder.
- \* Three piston rings for low oil carryover.

## TWO-STAGE PUMP SPECIFICATIONS

- \* Cast iron construction
- \* Disc type valves accessible without removing the head.
- \* Needle bearings at the wrist pin.
- \* Automotive type insert bearings at the crankshaft.
- \* Four piston rings for low oil carry over.
- \* Over-sized tapered roller main bearings.
- \* High flow flywheel.
- \* Crankcase side plate for easy access to the crankcase.
- \* Intake air filter/silencer.
- \* Cast iron inter-cooler with safety valve.

## SIMPLEX SPECIFICATIONS

- \* ASME code air receiver.
- \* ASME receiver safety valve.
- \* OSHA totally enclosed belt guard.
- \* NEMA electric motor.
- \* NEMA pressure switch (set for 80-100 psi operation).
- \* Receiver pressure gauge
- \* Receiver outlet valve.



Model D-106-ICD  
with optional mounted coalescing filter

# Air Compressors

Supplying reliable, efficient  
and economical compressed air

To meet the special needs of climate and instrument control applications **SAYLOR-BEALL CLIMATE CONTROL AIR COMPRESSORS** achieve low oil carry-over through slow operating RPM, tightly controlled cylinder tolerances and special ring design. Inlet air filter/silencers reduce operating noise levels for indoor application. Optional refrigerated air dryers, air cooled aftercoolers and compressed air filters remove liquid water and water vapor, dirt, oil aerosols and oil vapors to maintain system integrity.

**SAYLOR-BEALL's** dedication to customer satisfaction continues after the sale. Every product that carries the **SAYLOR-BEALL** name comes with the full support of an experienced air compressor company. **SAYLOR-BEALL** stands behind every unit with service and technical support. A large network of distributors throughout the United States and Canada assures convenient service and parts availability.

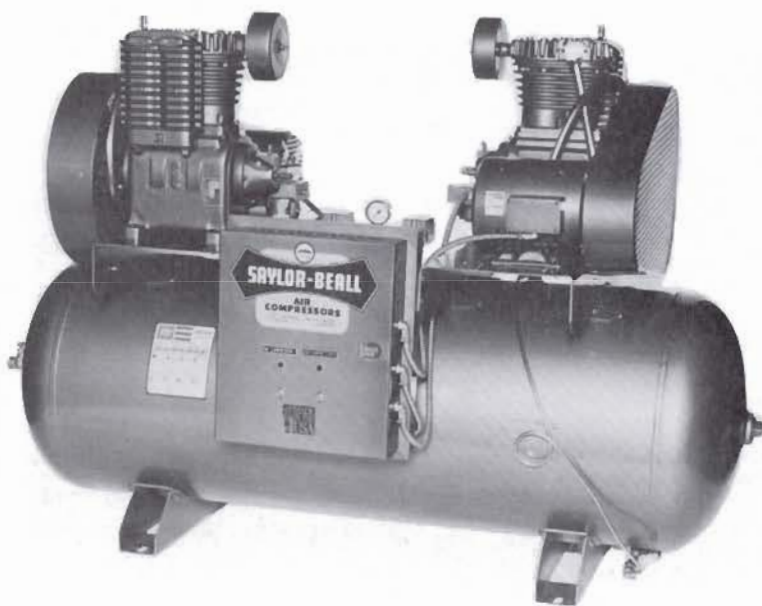
## DUPLEX SPECIFICATIONS

- \* ASME code air receiver.
- \* ASME receiver safety valve.
- \* OSHA totally enclosed belt guards (2).
- \* NEMA electric motors (2).
- \* NEMA pressure switches (2) - (set for 80-100 psi operation).
- \* Receiver pressure gauge.
- \* Alternating control package with magnetic starters (factory mounted and wired on most models).
- \* Receiver outlet valve.

## OPTIONS (For Simplex and Duplex Units)

- \* Full oil pressure lubrication.
- \* Magnetic starters.
- \* Alternating panels.
- \* Low oil level shutdown.
- \* Automatic tank drain.
- \* Belt guard mounted, fan cooled after-coolers.
- \* Refrigerated air dryers.
- \* Desiccant air dryers.
- \* Water separator filters.
- \* Coalescing compressed air filters.
- \* Carbon activated, oil vapor adsorbing compressed air filters.
- \* Tank vibration isolators.
- \* Flex outlet hose.

Many options can be factory mounted and/or wired.  
Please consult factory for details.



Model X-735-120-IC

## DUPLEX UNITS — TANK MOUNTED

Motor H.P.	Tank Size	Model Number	Pump Model	-----100 PSI Rating-----			Speed RPM	Dimensions L x W x H	Weight (lbs)
				Disp CFM	ACFM	ACIM			
1/2	30	XB-123-IC	(2) B212	5.4	3.4	5875	470	38x31x35	270
	60	XB-126-IC						48x31x39	370
3/4	30	XB-343-IC	(2) B212	8.0	5.4	9331	700	38x31x35	272
	60	XB-346-IC						48x31x39	507
1	60	XD-106-IC	(2) D412	12.2	7.8	13478	540	48x31x39	507
	80	XD-108-IC						53x31x39	552
1 1/2	80	X-715-80-IC	(2) 703	17.0	13.6	22810	435	63x40x46	970
	120	X-715-120-IC						69x40x50	1095
2	80	X-720-80-IC	(2) 703	21.0	16.6	28684	540	63x40x46	1008
	120	X-720-120-IC						69x40x50	1133
3	80	X-730-80-IC	(2) 705	31.0	24.6	42508	575	63x40x46	1072
	120	X-730-120-IC						69x40x50	1197
5	80	X-735-80-IC	(2) 705	46.0	36.6	63244	850	63x40x46	1078
	120	X-735-120-IC						69x40x50	1203
5	120	X-737-120-IC	(2) 707	55.8	44.4	76724	515	69x51x50	1403
	200	X-737-200-IC						72x51x56	1605
7 1/2	120	X-745-120-IC	(2) 707	79.8	62.4	107828	730	69x51x50	1415
	200	X-745-200-IC						72x51x56	1617
10	120	X-755-120-IC	(2) 707	92.0	73.2	126490	850	69x51x50	1428
	200	X-755-200-IC						72x51x56	1634
10	200	X-451020-IC	(2) 4500	102.0	83.6	144460	665	77x52x76	2445
	240	X-451024-IC						90x59x76	2680
15	200	X-451520-IC	(2) 4500	127.4	104.4	180404	830	77x52x76	2513
	240	X-451524-IC						90x59x76	2748
15	240	X-91524-IC	(2) 9000	168.8	144.2	249178	550	90x68x73	3316
20	240	X-92024-IC	(2) 9000	204.2	172.2	297562	665	90x68x73	3456
25	240	X-92524-IC	(2) 9000	239.4	203.2	351130	780	90x68x73	3556
30	240	X-93024-IC	(2) 9000	255.0	209.0	361152	830	90x68x73	3758

## DUPLEX UNITS — TANK MOUNTED WITH REFRIGERATED AIR DRYER

Motor H.P.	Tank Size	Model Number	Pump Model	-----100 PSI Rating-----			Speed RPM	Coalescing Filter P/N	Dimensions L x W x H	Weight (lbs)
				Disp CFM	ACFM	ACIM				
1/2	60	XB-126-ICD	(2) B212	5.4	3.4	5875	470	SBCF-10	48x31x39	410
3/4	60	XB-346-ICD	(2) B212	8.0	5.4	9331	700	SBCF-10	48x31x39	412
1	60	XD-106-ICD	(2) D412	12.2	7.8	13478	540	SBCF-10	48x31x39	446
	80	XD-108-ICD							63x31x39	491
1 1/2	80	X-715-80-ICD	(2) 703	17.0	13.6	22810	435	SCBF-20	63x40x46	1035
	120	X-715-120-ICD							69x40x50	1160
2	80	X-720-80-ICD	(2) 703	21.0	16.6	28684	540	SCBF-20	63x40x46	1173
	120	X-720-120-ICD							69x40x50	1298
3	80	X-730-80-ICD	(2) 705	31.0	24.8	42508	575	SBCF-20	63x40x46	1137
	120	X-730-120-ICD							69x40x50	1262
5	80	X-735-80-ICD	(2) 705	46.0	36.6	63244	850	SBCF-50	63x40x46	1175
	120	X-735-120-ICD							69x40x50	1300

## BASE MOUNTED UNITS

Motor H.P.	Model Number	Pump Model	-----100 PSI Rating-----			Speed RPM	Dimensions L x W x H	Weight (lbs)
			Disp CFM	ACFM	ACIM			
1/2	BB-120-IC	B212	2.7	1.7	2938	470	26x11x15 1/2	85
3/4	BB-340-IC	B212	4.0	2.7	4666	700	26x11x15 1/2	85
1	BD-100-IC	D412	6.1	3.9	6739	540	26x12x15 1/2	117
1 1/2	B-703-1-IC	703	8.5	6.6	11405	435	34x22x30	350
2	B-703-2-IC	703	10.5	8.3	14342	540	34x22x30	369
3	B-705-3-IC	705	15.5	12.3	21254	575	34x22x30	383
5	B-705-5-IC	705	23.0	18.3	31622	850	34x22x30	409
	B-707-5-IC	707	27.9	22.2	38362	515	45x23x24	474
7 1/2	B-707-7-IC	707	39.4	31.2	53914	730	45x23x24	503
10	B-707-10-IC	707	46.0	36.6	63245	850	45x23x24	517
	B-45100-IC	4500	51.0	41.8	72230	665	50x28x34	833
15	B-45150-IC	4500	63.7	52.2	90202	830	50x28x34	867
	B-9150-IC	9000	84.4	72.1	124589	550	59x28x32	1050
20	B-9200-IC	9000	102.1	86.1	148781	665	59x28x32	1101
25	B-9250-IC	9000	119.7	101.6	175565	780	59x28x32	1115
30	B-9300-IC	9000	127.4	104.5	180576	830	59x28x32	1136

## SIMPLEX UNITS — TANK MOUNTED

Motor H.P.	Tank Size	Model Number	Pump Model	-----100 PSI Rating-----			Speed RPM	Dimensions L x W x H	Weight (lbs)
				Disp CFM	ACFM	ACIM			
1/2	30	B-123-IC	B212	2.7	1.7	2938	470	38x16x32	197
	60	B-126-IC						48x20x36	297
3/4	30	B-343-IC	B212	4.0	2.7	4666	700	38x16x32	197
	60	B-346-IC						48x20x36	297
1	30	D-103-IC	D412	6.1	3.9	6739	540	38x16x32	224
	60	D-106-IC						48x20x36	324
1 1/2	60	715-60-IC	703	8.5	6.6	11405	435	48x21x47	511
	80	715-80-IC						63x21x47	556
2	60	720-60-IC	703	10.5	8.3	14342	540	48x21x47	532
	80	720-80-IC						63x21x47	577
3	60	730-60-IC	705	15.5	12.3	21254	575	48x21x47	554
	80	730-80-IC						63x21x47	599
5	80	735-80-IC	705	23.0	18.3	31622	850	63x21x47	570
	120	735-120-IC						69x24x51	615
5	80	737-80-IC	707	27.9	22.2	38362	515	63x21x47	707
	120	737-120-IC						69x24x51	838
7 1/2	80	745-80-IC	707	39.4	31.2	53914	730	63x21x47	713
	120	745-120-IC						69x24x51	840
10	80	755-80-IC	707	46.0	36.6	63245	850	63x21x47	733
	120	755-120-IC						69x21x51	854
10	120	451012-IC	4500	51.0	41.8	72230	665	75x29x58	1161
	200	451020-IC						78x30x63	1400
15	120	451512-IC	4500	63.7	52.2	90202	830	75x29x58	1195
	200	451520-IC						78x30x63	1434
15	200	91520-IC	9000	84.4	72.1	124589	550	78x30x63	1601
	240	91524-IC						85x30x63	1816
20	240	92024-IC	9000	102.1	86.1	148781	665	85x30x63	1858
25	240	92524-IC	9000	119.7	101.6	175565	780	85x30x63	1872
30	240	93024-IC	9000	127.4	104.5	180576	830	85x30x63	1893

## SIMPLEX UNITS — TANK MOUNTED WITH REFRIGERATED AIR DRYER

Motor H.P.	Tank Size	Model Number	Pump Model	-----100 PSI Rating-----			Speed RPM	Optional Coalescing Filter P/N	Dimensions L x W x H	Weight (lbs)
				Disp CFM	ACFM	ACIM				
1/2	30	B-123-ICD	B212	2.7	1.7	2938	470	SBCF-10	38x25x35	263
	60	B-126-ICD							48x25x39	463
3/4	30	B-343-ICD	B212	4.0	2.7	4666	700	SBCF-10	38x25x35	280
	60	B-346-ICD							48x25x39	473
1	30	D-103-ICD	D412	6.1	3.9	6739	540	SBCF-10	38x25x35	294
	60	D-106-ICD							48x25x39	477
1 1/2	80	715-80-ICD	703	8.5	6.6	11405	435	SBCF-10	79x32x54	626
2	80	720-80-ICD	703	10.5	8.3	14342	540	SBCF-10	79x32x54	647
3	80	730-80-ICD	705	15.5	12.3	21254	575	SBCF-20	79x32x54	677
5	80	735-80-ICD	705	23.0	18.3	31622	850	SBCF-20	79x32x54	693
	120	735-120-ICD							85x34x58	819
5	80	737-80-ICD	707	27.9	22.2	38362	515	SBCF-20	79x32x54	822
	120	737-120-ICD							85x34x58	953
7 1/2	80	745-80-ICD	707	39.4	31.2	53914	730	SBCF-50	79x32x54	828
	120	745-120-ICD							85x34x58	955
10	80	755-80-ICD	707	46.0	36.6	63245	850	SBCF-50	79x32x54	932
	120	755-120-ICD							85x34x58	1053
10	120	451012-ICD	4500	51.0	41.8	72230	665	SBCF-50	85x34x65	1361
15	120	451512-ICD	4500	63.7	52.2	90202	830	SBCF-50	85x34x65	1415

## PUMPS

HP Range	Model Number	Stages	At Max. HP -----100 PSI Rating-----			Speed RPM	Bore In. Dia.	Stroke In.	No. Cyl.	Dimensions L x W x H	Bolt Down L x W	Weight (Lbs)
			Disp. CFM	ACFM	ACIM							
1/2-3/4	B212	1	4.0	2.7	4666	700	2-1/2	2	1	7-1/2x6-1/4x11	2-15/16x5-1/2	30
1	D412	1	6.1	3.9	6739	540	2-1/2	2	2	7-1/2x6-1/4x11	5-7/8x5-1/2	45
1 1/2-2	703	2	10.5	8.3	14342	540	3-1/2x1-7/8	3-1/2	2	19-1/8x11-5/8x20-1/4	7-3/4x9	191
3-5	705	2	23.0	19.3	31622	850	4-1/8x2-1/8	3-1/2	2	19-1/8x11-5/8x20-1/4	7-3/4x9	197
5-10	707	2	46.0	36.6	63245	850	4-1/8x2-1/8	3-1/2	4	21-1/8x26-3/4x17-7/8	9-1/8x9-5/8	298
10-15	4500	2	51.0	41.8	72230	830	6-1/8x3-1/4	4-1/2	2	26-1/2x17-1/4x27	12-3/8x12-3/4	452
15-30	9000	2	127.4	104.5	180576	830	6-1/8x3-1/4	4-1/2	4	26-1/2x37-1/2x27	12-3/8x12-3/4	666