

SAYLOR-BEALL MFG. CO.

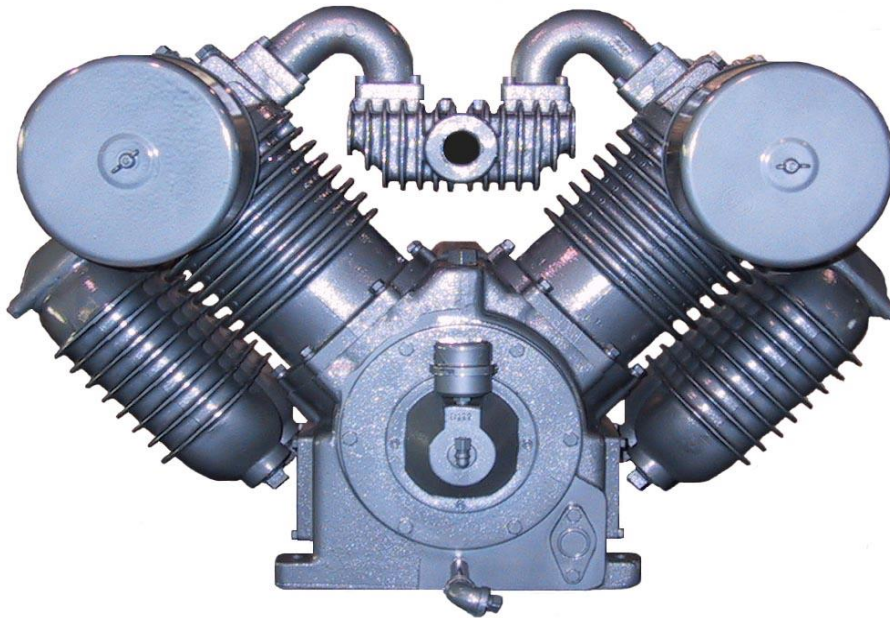


400 N. Kibbee St., St. Johns, MI 48879

Ph: 800-248-9001, Fax: 989-224-8788

www.saylor-beall.com

Master Compressor Price List



Effective August 16, 2021

Freight Policy: The prices on this list are f.o.b. St. Johns, MI with freight allowed to first destination in the United States on shipments weighing more than 350 lbs. **Additional freight charges** may be applied to drop shipments. Seller shall have option to choose most advantageous and economical routing. On shipments destined to Alaska or Hawaii, freight prepayment will be made only to carrier's terminal at usual port of embarkation.

Contents

Description	Stages	Driver	Lubrication Type	Page
Bare Pumps				1
Horizontal Tank Mounted	Two Stage	Electric	Splash Lubricated	2
Horizontal Tank Mounted	Two Stage	Electric	Pressure Lubricated	3
Options				4,5
Vertical Tank Mounted	Two Stage	Electric	Splash Lubricated	6
Vertical Tank Mounted	Two Stage	Electric	Pressure Lubricated	6
Engine Driven	Two Stage	Gas	Splash Lubricated	7
Engine Driven	Two Stage	Gas	Pressure Lubricated	7
Duplex	Two Stage	Electric	Splash Lubricated	8
Duplex	Two Stage	Electric	Pressure Lubricated	9
Base Mounted	Two Stage	Electric	Splash Lubricated	10
Base Mounted	Two Stage	Electric	Pressure Lubricated	10
Single Stage	Single	Electric		11
Oilless	Single & Two Stage	Electric		12
Compressed Air System	Two Stage	Electric	Refrigerated Dryer	12
Compressed Air System	Two Stage	Electric	Desiccant Dryer	13
Climate Control Compressors		Electric		14 to 17
Dur-o-line	Two Stage	Electric & Gas		18
Rotary Screw Compressors		Electric		19
Dryers, Aftercoolers				20
Filters, Drains				21,22
Performance Packages				23

Bare Pumps

Splash Lubricated - Two Stage - Air Compressor Pumps

At Maximum Hp

HP RANGE	PUMP MODEL	RPM	CFM DISP.	CFM DIVD.	BORE	STROKE	NO. CYL.	WEIGHT	LIST PRICE	DEDUCTION FOR FLYWHEEL OMISSION
1 1/2-2	703	510	10.0	7.50	3 1/2 & 1 7/8	3 1/2	2	191	\$1,531	\$138
3-5	705	845	23.0	17.3	4 1/8 & 2 1/8	3 1/2	2	197	\$1,787	\$138
7 1/2-10	707	845	46.0	34.4	4 1/8 & 2 1/8	3 1/2	4	298	\$3,594	\$138
10-15	4500	830	63.7	51.0	6 1/8 & 3 1/4	4 1/2	2	452	\$5,641	\$263
15-30	9000	830	127.4	101.1	6 1/8 & 3 1/4	4 1/2	4	666	\$7,736	\$263
1 1/2-2	UL-703	510	10.0	7.50	3 1/2 & 1 7/8	3 1/2	2	191	\$1,805	\$138
3-5	UL-705	845	23.0	17.3	4 1/8 & 2 1/8	3 1/2	2	197	\$2,062	\$138
7 1/2-10	UL-707	845	46.0	34.4	4 1/8 & 2 1/8	3 1/2	4	298	\$3,961	\$138
10-15	UI-4500	830	63.7	51.0	6 1/8 & 3 1/4	4 1/2	2	452	\$5,941	\$263
15-30	UL-9000	830	127.4	101.1	6 1/8 & 3 1/4	4 1/2	4	666	\$8,135	\$263

Models with UL prefix contain head unloaders

Pressure Lubricated - Two Stage - Air Compressor Pumps

At Maximum Hp

HP RANGE	PUMP MODEL	RPM	CFM DISP.	CFM DIVD.	BORE	STROKE	NO. CYL.	WEIGHT	LIST PRICE	DEDUCTION FOR FLYWHEEL OMISSION
1 1/2-2	PL-703	510	10.0	7.50	3 1/2 & 1 7/8	3 1/2	2	194	\$2,038	\$138
3-5	PL-705	845	23.0	17.3	4 1/8 & 2 1/8	3 1/2	2	200	\$2,313	\$138
7 1/2-10	PL-707	845	46.0	34.4	4 1/8 & 2 1/8	3 1/2	4	301	\$4,401	\$138
10-15	PL-4500	830	63.7	51.0	6 1/8 & 3 1/4	4 1/2	2	461	\$6,939	\$263
15-30	PL-9000	830	127.4	101.1	6 1/8 & 3 1/4	4 1/2	4	675	\$9,337	\$263
1 1/2-2	UL-PL-703	510	10.0	7.50	3 1/2 & 1 7/8	3 1/2	2	194	\$2,312	\$138
3-5	UL-PL-705	845	23.0	17.3	4 1/8 & 2 1/8	3 1/2	2	200	\$2,589	\$138
7 1/2-10	UL-PL-707	845	46.0	34.4	4 1/8 & 2 1/8	3 1/2	4	301	\$4,769	\$138
10-15	UL-PL-4500	830	63.7	51.0	6 1/8 & 3 1/4	4 1/2	2	461	\$7,239	\$263
15-30	UL-PL-9000	830	127.4	101.1	6 1/8 & 3 1/4	4 1/2	4	675	\$9,737	\$263

Models with UL prefix contain head unloaders

Splash Lubricated - Single Stage - Air Compressor Pumps

At Maximum Hp

HP RANGE	PUMP MODEL	RPM	CFM DISP.	CFM DIVD.	BORE	STROKE	NO. CYL.	WEIGHT	LIST PRICE	DEDUCTION FOR FLYWHEEL OMISSION
1/2 - 3/4	F	700	4.0	2.6	2 1/2	2	1	30	\$676	\$52
1 - 1 1/2	K	810	9.2	5.9	2 1/2	2	2	44	\$1,192	\$52



Saylor-Beall Mfg. Co.
400 N. Kibbee St.
St. Johns, MI 48879
www.saylor-beall.com

Toll-free: 1-800-248-9001
Fax: 1-989-224-8788

SPLASH LUBRICATED - TWO STAGE - ELECTRIC MOTOR HORIZONTAL TANK MOUNTED

HP	TANK	HORIZONTAL		CFM @		WT	1 PHASE	3 PHASE
	GAL	MODEL	PUMP	RPM	175 PSI	LBS.		
1 1/2	60	715-60	703	400	5.8	508	\$3,523	\$3,509
1 1/2	80	715-80	703	400	5.8	553	\$3,830	\$3,816
2	60	720-60	703	510	7.5	529	\$3,664	\$3,600
2	80	720-80	703	510	7.5	574	\$3,971	\$3,907
3	60	730-60	705	540	11.1	551	\$3,727	\$3,606
3	80	730-80	705	540	11.1	596	\$4,034	\$3,913
3	120	730-120	705	540	11.1	722	\$4,784	\$4,663
5	60	735-60	705	845	17.3	567	\$3,804	\$3,612
5	80	735-80	705	845	17.3	612	\$4,111	\$3,919
5	120	735-120	705	845	17.3	738	\$4,861	\$4,669
5	80	737-80	707	455	18.5	704	\$6,549	\$6,357
5	120	737-120	707	455	18.5	835	\$7,119	\$6,927
7 1/2	80	745-80	707	650	26.2	710	\$7,382	\$6,578
7 1/2	120	745-120	707	650	26.2	837	\$7,952	\$7,148
10	80	755-80	707	845	34.4	730	\$8,410	\$7,011
10	120	755-120	707	845	34.4	851	\$8,980	\$7,581
10	200	755-200	707	845	34.4	1090	\$9,860	\$8,461
10	120	451012	4500	605	38.0	1151		\$8,919
10	200	451020	4500	605	38.0	1390		\$9,788
15	120	451512	4500	830	51.0	1185		\$9,526
15	200	451520	4500	830	51.0	1424		\$10,395
15	120	91512	9000	480	61.2	1350		\$11,478
15	200	91520	9000	480	61.2	1592		\$12,347
20	120	92012	9000	605	76.1	1395		\$12,082
20	200	92020	9000	605	76.1	1634		\$12,951
20	240	92024	9000	605	76.1	1849		\$13,420
25	120	92512	9000	710	89.6	1409		\$12,689
25	200	92520	9000	710	89.6	1648		\$13,558
25	240	92524	9000	710	89.6	1863		\$14,027
30	120	93012	9000	830	101.1	1430		\$13,294
30	200	93020	9000	830	101.1	1669		\$14,163
30	240	93024	9000	830	101.1	1884		\$14,632



Saylor-Beall Mfg. Co.
400 N. Kibbee St.
St. Johns, MI 48879
www.saylor-beall.com

Toll-free: 1-800-248-9001
Fax: 1-989-224-8788

PRESSURE LUBRICATED - TWO STAGE - ELECTRIC MOTOR HORIZONTAL TANK MOUNTED

HP	TANK	HORIZONTAL		RPM	CFM @	WT	1 PHASE	3 PHASE
	GAL	MODEL	PUMP		175 PSI	LBS.		
1 1/2	60	PL-715-60	PL-703	400	5.8	508	\$4,406	\$4,392
1 1/2	80	PL-715-80	PL-703	400	5.8	553	\$4,713	\$4,699
2	60	PL-720-60	PL-703	510	7.5	529	\$4,546	\$4,482
2	80	PL-720-80	PL-703	510	7.5	574	\$4,853	\$4,789
3	60	PL-730-60	PL-705	540	11.1	551	\$4,610	\$4,489
3	80	PL-730-80	PL-705	540	11.1	596	\$4,917	\$4,796
3	120	PL-730-120	PL-705	540	11.1	722	\$5,667	\$5,546
5	60	PL-735-60	PL-705	845	17.3	567	\$4,686	\$4,495
5	80	PL-735-80	PL-705	845	17.3	615	\$4,993	\$4,802
5	120	PL-735-120	PL-705	845	17.3	741	\$5,743	\$5,552
5	80	PL-737-80	PL-707	455	18.5	704	\$7,771	\$7,580
5	120	PL-737-120	PL-707	455	18.5	835	\$8,341	\$8,150
7 1/2	80	PL-745-80	PL-707	650	26.2	710	\$8,606	\$7,802
7 1/2	120	PL-745-120	PL-707	650	26.2	837	\$9,176	\$8,372
10	80	PL-755-80	PL-707	845	34.4	730	\$9,634	\$8,235
10	120	PL-755-120	PL-707	845	34.4	851	\$10,204	\$8,805
10	200	PL-755-200	PL-707	845	34.4	1090	\$11,084	\$9,685
10	120	PL-451012	PL-4500	605	38.0	1151		\$10,537
10	200	PL-451020	PL-4500	605	38.0	1390		\$11,406
15	120	PL-451512	PL-4500	830	51.0	1185		\$11,143
15	200	PL-451520	PL-4500	830	51.0	1424		\$12,012
15	120	PL-91512	PL-9000	480	61.2	1350		\$13,635
15	200	PL-91520	PL-9000	480	61.2	1592		\$14,504
20	120	PL-92012	PL-9000	605	76.1	1394		\$14,239
20	200	PL-92020	PL-9000	605	76.1	1634		\$15,108
20	240	PL-92024	PL-9000	605	76.1	1849		\$15,577
25	120	PL-92512	PL-9000	710	89.6	1409		\$14,845
25	200	PL-92520	PL-9000	710	89.6	1648		\$15,714
25	240	PL-92524	PL-9000	710	89.6	1863		\$16,183
30	120	PL-93012	PL-9000	830	101.1	1430		\$15,451
30	200	PL-93020	PL-9000	830	101.1	1669		\$16,320
30	240	PL-93024	PL-9000	830	101.1	1884		\$16,789



Saylor-Beall Mfg. Co.
400 N. Kibbee St.
St. Johns, MI 48879
www.saylor-beall.com

Toll-free: 1-800-248-9001
Fax: 1-989-224-8788

Optional Compressor Accessories

Effective Aug 16, 2021

MAGNETIC STARTERS	LIST PRICE
1 1/2 - 5 HP, 1 PH	\$288
1 1/2 - 5 HP, 3 PH	\$288
7 1/2 HP, 1 PH	\$558
7 1/2 HP, 3 PH	\$371
10 HP, 1 PH	\$943
10 - 15 HP, 3 PH	\$558
20 - 25 HP, 3 PH 460V	\$558
20-25 HP, 3 PH 230V	\$1,178
30 HP, 3 PH 460V	\$1,178
30 HP, 3 PH 230V	\$1,455

DUAL CONTROL	
F-Pump	\$153
K-Pump	\$221
1 1/2 - 5 HP (703 & 705)	
discharge unloaders	\$235
head unloaders	\$342
5 - 10 HP (707)	
discharge unloaders	\$362
head unloaders	\$416
10 - 15 HP (4500)	
head unloaders	\$369
15 - 30 HP (9000)	
head unloaders	\$459

AIR COOLED AFTERCOOLERS*	
1 1/2 - 5 HP (703 & 705)	\$791
5 - 10 HP (707)	\$914
10 - 15 HP (4500)	\$1,034
15 - 20 HP (9000)	\$1,187
25 HP (9000)	\$1,374
30 HP (9000)	\$1,555

*aftercooler is mounted **inside** belt guard

MASSACHUSETTS SPECIFICATION FITTINGS	
1 1/2 - 10 HP (703, 705, 707)	\$127
10 - 30 HP (4500, 9000)	\$151

PEDESTAL	
1 1/2 - 10 HP - Part No. (6002) (703, 705, 707)	\$300
10 - 30 HP - Part No. (6002-D) (4500, 9000)	\$392

AUTOMATIC TANK DRAIN	
(All Models) - Part No. (4906 - E) with Y Strainer	\$201

Y STRAINER - recommended with Auto Tank Drain	
Part No. (6532)	\$48

LOW OIL CONTROL	
(All Models) Part No. (6304) Two Stage Only	\$177

VIBRATION ISOLATORS	
30 to 80 ga. Receivers - Part No. (6502)	\$98
120 to 240 gal. Receivers - Part No. (8957)	\$207

FLEX HOSE - DOWN LINE	
3/4" * 12" - Part No. (4459)	\$193
1 3/4" * 18" - Part No. (8276)	\$262

Quiet Intake Filters	
1" Part No. (6105-QF)	\$102
2" Part No. (8830-1)	\$392

CRANKCASE HEATER	
(6503)	\$83

SPIN ON OIL FILTER	
Pressure lubricated models only	\$235

PRESSURE REGULATORS	
3/4" w/gauge to 250 psi Part No. (6048)	\$187

COALESCING FILTER BREATHER	
703, 705 & 4500 Part No. (8996)	\$239
707 & 9000 Part No. (8995)	\$225



www.saylor-beall.com

Saylor-Beall Mfg. Co.
400 N. Kibbee St.
St. Johns, MI 48879
www.saylor-beall.com

Toll-free: 1-800-248-9001
Fax: 1-989-224-8788

UL Listed Alternator Control Panels

SERIES 321 (Without Disconnect Switches) - Wired alternator control panel in NEMA 1 enclosure. Complete with (2) magnetic line starters, (2) pilot lights and alternator control relay.

MOTOR HP	PHASE	VOLTAGE	PRICE WITHOUT DISCONNECT SWITCHES
1 1/2 - 5	1	230	\$1,355
1 1/2 - 5	3	230 or 460	\$1,355
7 1/2	3	230 or 460	\$1,480
10 - 15	3	230 or 460	\$1,763
20 - 25	3	460	\$1,763
20 - 25	3	230	\$2,879
30	3	460	\$2,879
30	3	230	\$3,312

ALTERNATOR CONTROLS

4935-240 Two Compressor Alternator in NEMA 1 Enclosure (w/out magnetic starters) 208/230 volt	\$426
4935-460 Two Compressor Alternator in NEMA 1 Enclosure (w/out magnetic starters) 460 volt	\$685

ASME Tanks

CAPACITY	DIMENSIONS	MAXIMUM	APPROX.	W/ LEGS & BASE	
		PRESSURE PSIG	SHPG. WT	PART NO.	PRICE
30-H	16 x 38	200	110	ARA339	\$1,297
60-H	20 x 48	200	225	ARA650	\$1,614
60-V	20 x 48	200	225	ARA651	\$1,614
80-H	20 x 63	200	300	ARA860	\$1,684
80-V	24 x 48	200	310	ARA861	\$2,309
120-H	24 x 69	200	425	ARA1263	\$2,790
120-V	30 x 48	200	450	ARA1261	\$3,037
200-H	30 x 72	200	665	ARA2044	\$4,671
240-H	30 x 85	200	900	ARA2432	\$6,715



SPLASH LUBRICATED - TWO STAGE - ELECTRIC MOTOR VERTICAL TANK MOUNTED

HP	TANK	VERTICAL	PUMP	RPM	CFM @	WT	1 PHASE	3 PHASE
	GAL	MODEL			175 PSI	LBS.		
1 1/2	60	VT-715-60	703	400	5.8	508	\$3,523	\$3,509
1 1/2	80	VT-715-80	703	400	5.8	553	\$3,830	\$3,816
2	60	VT-720-60	703	510	7.5	529	\$3,664	\$3,600
2	80	VT-720-80	703	510	7.5	574	\$3,971	\$3,907
3	60	VT-730-60	705	540	11.1	551	\$3,727	\$3,606
3	80	VT-730-80	705	540	11.1	596	\$4,034	\$3,913
3	120	VT-730-120	705	540	11.1	722	\$4,784	\$4,663
5	60	VT-735-60	705	845	17.3	567	\$3,804	\$3,612
5	80	VT-735-80	705	845	17.3	612	\$4,111	\$3,919
5	120	VT-735-120	705	845	17.3	738	\$4,861	\$4,669
5	120	VT-737-120	707	455	18.5	835	\$7,119	\$6,927
7 1/2	80	VT-745-80	707	650	26.2	709	\$7,383	\$6,578
7 1/2	120	VT-745-120	707	650	26.2	837	\$7,952	\$7,148
10	120	VT-755-120	707	845	34.4	851	\$8,980	\$7,581

PRESSURE LUBRICATED - TWO STAGE - ELECTRIC MOTOR VERTICAL TANK MOUNTED

HP	TANK	VERTICAL	PUMP	RPM	CFM @	WT	1 PHASE	3 PHASE
	GAL	MODEL			175 PSI	LBS.		
1 1/2	60	VT-PL-715-60	PL-703	400	5.8	508	\$4,406	\$4,392
1 1/2	80	VT-PL-715-80	PL-703	400	5.8	553	\$4,713	\$4,699
2	60	VT-PL-720-60	PL-703	510	7.5	529	\$4,546	\$4,482
2	80	VT-PL-720-80	PL-703	510	7.5	574	\$4,853	\$4,789
3	60	VT-PL-730-60	PL-705	540	11.1	551	\$4,610	\$4,489
3	80	VT-PL-730-80	PL-705	540	11.1	596	\$4,917	\$4,796
3	120	VT-PL-730-120	PL-705	540	11.1	722	\$5,667	\$5,546
5	60	VT-PL-735-60	PL-705	845	17.3	567	\$4,686	\$4,495
5	80	VT-PL-735-80	PL-705	845	17.3	615	\$4,993	\$4,802
5	120	VT-PL-735-120	PL-705	845	17.3	741	\$5,743	\$5,552
5	120	VT-PL-737-120	PL-707	455	18.5	835	\$8,341	\$8,149
7.5	80	VT-PL-745-80	707	650	26.2	709	\$8,606	\$7,802
7 1/2	120	VT-PL-745-120	PL-707	650	26.2	837	\$9,176	\$8,372
10	120	VT-PL-755-120	PL-707	845	34.4	851	\$10,204	\$8,805



Saylor-Beall Mfg. Co.
400 N. Kibbee St.
St. Johns, MI 48879
www.saylor-beall.com

Toll-free: 1-800-248-9001
Fax: 1-989-224-8788

SPLASH LUBRICATED - TWO STAGE - GASOLINE ENGINE Effective Aug 16, 2021
HORIZONTAL TANK MOUNTED

HP	TANK	HORIZONTAL		CFM @		WT	PRICE	Honda	Diesel
	GAL	MODEL	PUMP	RPM	175 PSI	LBS.		Adder	Adder
14	30	UL-753	705	900	18.8	527	\$4,667	\$487	\$5,036
14	60	UL-750	705	900	18.8	618	\$4,896	\$487	\$5,036
14	80	UL-758	705	900	18.8	670	\$5,149	\$487	\$5,036
18	30	UL-763	707	925	38.4	792	\$9,084	\$882	\$9,566
18	60	UL-764	707	925	38.4	883	\$9,314	\$882	\$9,566
18	80	UL-765	707	925	38.4	935	\$9,566	\$882	\$9,566
25	120	452515GC	UL-4500	806	49.5	1195	\$13,304	\$856	\$16,779

PRESSURE LUBRICATED - TWO STAGE - GASOLINE ENGINE
HORIZONTAL TANK MOUNTED

HP	TANK	HORIZONTAL		CFM @		WT	PRICE	Honda	Diesel
	GAL	MODEL	PUMP	RPM	175 PSI	LBS.		Adder	Adder
14	30	UL-PL-753	PL-705	900	18.8	527	\$5,550	\$487	\$5,036
14	60	UL-PL-750	PL-705	900	18.8	618	\$5,779	\$487	\$5,036
14	80	UL-PL-758	PL-705	900	18.8	670	\$6,032	\$487	\$5,036
18	30	UL-PL-763	PL-707	925	38.4	792	\$10,307	\$882	\$9,566
18	60	UL-PL-764	PL-707	925	38.4	883	\$10,537	\$882	\$9,566
18	80	UL-PL-765	PL-707	925	38.4	935	\$10,789	\$882	\$9,566
25	120	PL-452515GC	UL-PL-4500	806	49.5	1195	\$14,921	\$856	\$16,779

SPLASH LUBRICATED - TWO STAGE - GASOLINE ENGINE
BASE MOUNTED

HP	MODEL	PUMP	RPM	CFM @		WT	PRICE	Honda	Diesel
				175 PSI	LBS.	Adder		Adder	
14	ULB-705-G	705	900	18.8	451		\$4,402	\$487	\$5,036
18	ULB-707-G	707	925	38.4	708		\$9,056	\$881	\$9,566
25	B4525GC	UL-4500	806	49.5	942		\$12,325	\$856	\$16,779

PRESSURE LUBRICATED - TWO STAGE - GASOLINE ENGINE
BASE MOUNTED

HP	MODEL	PUMP	RPM	CFM @		WT	PRICE	Honda	Diesel
				175 PSI	LBS.	Adder		Adder	
14	PL-ULB-705-G	PL-705	900	18.8	451		\$5,285	\$487	\$5,036
18	PL-ULB-707-G	PL-707	925	38.4	708		\$10,279	\$881	\$9,566
25	PL-B4525GC	UL-PL-4500	806	49.5	942		\$13,942	\$856	\$16,779

All models include electric start and engine slow down. Other engine make and models available, consult factory.

Honda HP of 11, 18 and 24 corresponds to Kohler HP of 14, 18 and 25

Kohler Diesel HP of 10, 14 and 30 corresponds to Kohler HP of 14, 18 and 25



Saylor-Beall Mfg. Co.
 400 N. Kibbee St.
 St. Johns, MI 48879
 www.saylor-beall.com

Toll-free: 1-800-248-9001
 Fax: 1-989-224-8788

Splash Lubricated Duplex Compressors

HP	TANK		PUMP	RPM	CFM@		WT LBS.	1 PHASE	3 PHASE
	GAL	MODEL			175 PSI				
1 1/2	80	X-715-80	703	400	11.6	970	\$8,754	\$8,487	
1 1/2	120	X-715-120	703	400	11.6	1095	\$9,298	\$9,031	
1 1/2	200	X-715-200	703	400	11.6	1301	\$10,209	\$9,942	
2	80	X-720-80	703	510	15	1008	\$8,953	\$8,591	
2	120	X-720-120	703	510	15	1133	\$9,497	\$9,135	
2	200	X-720-200	703	510	15	1339	\$10,408	\$10,046	
3	80	X-730-80	705	540	22.2	1072	\$9,136	\$8,674	
3	120	X-730-120	705	540	22.2	1197	\$9,680	\$9,218	
3	200	X-730-200	705	540	22.2	1403	\$10,591	\$10,129	
5	80	X-735-80	705	845	34.6	1078	\$9,426	\$8,864	
5	120	X-735-120	705	845	34.6	1203	\$9,970	\$9,408	
5	200	X-735-200	705	845	34.6	1409	\$10,881	\$10,319	
5	120	X-737-120	707	455	37	1403	\$12,870	\$12,307	
5	200	X-737-200	707	455	37	1609	\$13,781	\$13,218	
7 1/2	120	X-745-120	707	655	53.8	1400		\$13,140	
7 1/2	200	X-745-200	707	655	53.8	1605		\$14,051	
10	120	X-755-120	707	845	68.8	1428		\$15,101	
10	200	X-755-200	707	845	68.8	1634		\$16,012	
10	200	X-451020	4500	605	76	2445		\$21,482	
10	240	X-451024	4500	605	76	2680		\$22,367	
15	200	X-451520	4500	830	102	2513		\$22,693	
15	240	X-451524	4500	830	102	2748		\$23,578	
15	200	X-91520	9000	480	122.4	3081		\$26,585	
15	240	X-91524	9000	480	122.4	3316		\$27,470	
20	200	X-92020	9000	605	152.2	3221	Note 2	\$27,800	
20	240	X-92024	9000	605	152.2	3456	Note 2	\$28,685	
25	200	X-92520	9000	710	179.2	3331	Note 2	\$29,012	
25	240	X-92524	9000	710	179.2	3556	Note 2	\$29,897	
30	200	X-93020	9000	830	202.2	3521	Note 3	\$31,211	
30	240	X-93024	9000	830	202.2	3756	Note 3	\$32,096	

Note 1 - Price includes alternator control panel mounted and wired.

Note 2 - Add \$1,239 list for 230 volt.

Note 3 - Add \$555 list for 230 volt.



Saylor-Beall Mfg. Co.
400 N. Kibbee St.
St. Johns, MI 48879
www.saylor-beall.com

Toll-free: 1-800-248-9001
Fax: 1-989-224-8788

Pressure Lubricated Duplex Compressors

HP	TANK		PUMP	RPM	CFM@	WT	1 PHASE	3 PHASE
	GAL	MODEL			175 PSI	LBS.		
1 1/2	80	X-PL-715-80	PL-703	400	11.6	970	\$10,519	\$10,253
1 1/2	120	X-PL-715-120	PL-703	400	11.6	1095	\$11,063	\$10,797
1 1/2	200	X-PL-715-200	PL-703	400	11.6	1301	\$11,974	\$11,707
2	80	X-PL-720-80	PL-703	510	15	1008	\$10,718	\$10,357
2	120	X-PL-720-120	PL-703	510	15	1133	\$11,262	\$10,901
2	200	X-PL-720-200	PL-703	510	15	1339	\$12,173	\$11,812
3	80	X-PL-730-80	PL-705	540	22.2	1072	\$10,902	\$10,440
3	120	X-PL-730-120	PL-705	540	22.2	1197	\$11,446	\$10,984
3	200	X-PL-730-200	PL-705	540	22.2	1403	\$12,356	\$11,894
5	80	X-PL-735-80	PL-705	845	34.6	1078	\$11,192	\$10,629
5	120	X-PL-735-120	PL-705	845	34.6	1203	\$11,736	\$11,173
5	200	X-PL-735-200	PL-705	845	34.6	1409	\$12,647	\$12,084
5	120	X-PL-737-120	PL-707	455	37	1403	\$15,317	\$14,755
5	200	X-PL-737-200	PL-707	455	37	1609	\$16,228	\$15,666
7 1/2	120	X-PL-745-120	PL-707	655	53.8	1400		\$15,588
7 1/2	200	X-PL-745-200	PL-707	655	53.8	1605		\$16,499
10	120	X-PL-755-120	PL-707	845	68.8	1428		\$17,549
10	200	X-PL-755-200	PL-707	845	68.8	1634		\$18,460
10	200	X-PL-451020	PL-4500	605	76	2445		\$24,716
10	240	X-PL-451024	PL-4500	605	76	2680		\$25,601
15	200	X-PL-451520	PL-4500	830	102	2513		\$25,927
15	240	X-PL-451524	PL-4500	830	102	2748		\$26,812
15	200	X-PL-91520	PL-9000	480	122.4	3081		\$30,898
15	240	X-PL-91524	PL-9000	480	122.4	3316		\$31,783
20	200	X-PL-92020	PL-9000	605	152.2	3221	Note 2	\$32,113
20	240	X-PL-92024	PL-9000	605	152.2	3456	Note 2	\$32,998
25	200	X-PL-92520	PL-9000	710	179.2	3331	Note 2	\$33,326
25	240	X-PL-92524	PL-9000	710	179.2	3556	Note 2	\$34,211
30	200	X-PL-93020	PL-9000	830	202.2	3521	Note 3	\$35,524
30	240	X-PL-93024	PL-9000	830	202.2	3756	Note 3	\$36,409

Note 1 - Price includes alternator control panel mounted and wired.

Note 2 - Add \$1,239 list for 230 volt.

Note 3 - Add \$555 list for 230 volt.



Saylor-Beall Mfg. Co.
400 N. Kibbee St.
St. Johns, MI 48879
www.saylor-beall.com

Toll-free: 1-800-248-9001
Fax: 1-989-224-8788

Splash Lubricated - Two Stage - Electric Motor Base Mounted

HP	MODEL	PUMP	RPM	CFM @	WT	1 PHASE	3 PHASE
				175 PSI	LBS.		
1.5	B-703-1	703	400	5.8	350	\$3,442	\$3,429
2	B-703-2	703	510	7.5	369	\$3,547	\$3,481
3	B-705-3	705	540	11.1	393	\$3,706	\$3,584
5	B-705-5	705	845	17.3	409	\$3,781	\$3,590
5	B-707-5	707	455	18.5	474	\$5,717	\$5,527
7.5	B-707-7	707	655	26.2	503		\$5,749
10	B-707-10	707	845	34.4	517		\$6,721
10	B-45100	4500	605	38.0	833		\$7,811
15	B-45150	4500	830	51.0	867		\$8,415
15	B-9150	9000	480	61.2	1050		\$10,364
20	B-9200	9000	605	76.1	1092		\$10,970
25	B-9250	9000	710	89.6	1106		\$11,577
30	B-9300	9000	830	101.1	1127		\$12,181

Includes air pressure gauge, inline check valve, 200 psi safety valve and pressure switch.

Pressure Lubricated - Two Stage - Electric Motor Base Mounted

HP	MODEL	PUMP	RPM	CFM @	WT	1 PHASE	3 PHASE
				175 PSI	LBS.		
1.5	BPL-703-1	PL-703	400	5.8	350	\$4,325	\$4,302
2	BPL-703-2	PL-703	510	7.5	369	\$4,429	\$4,355
3	BPL-705-3	PL-705	540	11.1	393	\$4,589	\$4,461
5	BPL-705-5	PL-705	845	17.3	409	\$4,664	\$4,466
5	BPL-707-5	PL-707	455	18.5	474	\$6,941	\$6,723
7.5	BPL-707-7	PL-707	655	26.2	503		\$6,949
10	BPL-707-10	PL-707	845	34.4	517		\$7,940
10	BPL-45100	PL-4500	605	38.0	833		\$9,395
15	BPL-45150	PL-4500	830	51.0	867		\$10,011
15	BPL-9150	PL-9000	480	61.2	1050		\$12,460
20	BPL-9200	PL-9000	605	76.1	1092		\$13,078
25	BPL-9250	PL-9000	710	89.6	1106		\$13,697
30	BPL-9300	PL-9000	830	101.1	1127		\$14,313

Includes air pressure gauge, inline check valve, 200 psi safety valve and pressure switch.



Saylor-Beall Mfg. Co.
400 N. Kibbee St.
St. Johns, MI 48879
www.saylor-beall.com

Toll-free: 1-800-248-9001
Fax: 1-989-224-8788

SPLASH LUBRICATED - SINGLE STAGE - ELECTRIC MOTOR HORIZONTAL TANK MOUNTED

TANK			CFM @			WT	1 PHASE	3 PHASE
HP	GAL	MODEL	PUMP	RPM	100 PSI	LBS.		
1/2	20	FMT-115	F	470	1.7	139	\$2,186	\$2,186
1/2	30	FMT-103	F	470	1.7	197	\$2,290	\$2,290
3/4	20	FMT-206	F	700	2.6	139	\$2,269	\$2,269
3/4	30	FMT-306	F	700	2.6	197	\$2,373	\$2,373
1	30	KMT-405	K	540	3.9	224	\$2,818	\$2,769
1	60	KMT-403	K	540	3.9	324	\$3,068	\$3,020
1 1/2	30	KMT-404	K	810	5.9	224	\$2,883	\$2,824
1 1/2	60	KMT-406	K	810	5.9	324	\$3,133	\$3,073

SPLASH LUBRICATED - SINGLE STAGE - ELECTRIC MOTOR VERTICAL TANK MOUNTED

TANK			CFM @			WT	1 PHASE	3 PHASE
HP	GAL	MODEL	PUMP	RPM	100 PSI	LBS.		
1/2	30	VT-FMT-103	F	470	1.7	197	\$2,290	\$2,290
3/4	30	VT-FMT-306	F	700	2.6	197	\$2,373	\$2,373
1	30	VT-KMT-405	K	540	3.9	224	\$2,818	\$2,769
1	60	VT-KMT-403	K	540	3.9	324	\$3,068	\$3,020
1 1/2	30	VT-KMT-404	K	810	5.9	224	\$2,883	\$2,824
1 1/2	60	VT-KMT-406	K	810	5.9	324	\$3,133	\$3,073

SPLASH LUBRICATED - SINGLE STAGE - ELECTRIC MOTOR BASE MOUNTED

HP	MODEL	PUMP	RPM	CFM @		WT	1 PHASE	3 PHASE
				100 PSI	LBS.			
1/2	BF-120	F	470	1.7	62		\$2,029	\$2,029
3/4	BF-340	F	700	2.6	70		\$2,079	\$2,079
1	BK-100	K	540	3.9	115		\$2,534	\$2,485
1 1/2	BK-150	K	810	5.9	130		\$2,599	\$2,538



Saylor-Beall Mfg. Co.
400 N. Kibbee St.
St. Johns, MI 48879
www.saylor-beall.com

Toll-free: 1-800-248-9001
Fax: 1-989-224-8788

Oilless Air Compressors

HP	TANK		PUMP	RPM	CFM @		WT LBS.	1 PHASE	3 PHASE
	GAL	MODEL			175 PSI	75 PSI			
1	30	SBSOL-1-30	SBSOL-15	540	3.1	220	\$3,061	\$3,061	
1 1/2	30	SBSOL-1.5-30	SBSLO-22	440	4.7	240	\$4,076	\$4,062	
2	30	SBSOL-2-30	SBSOL-22	605	6.4	250	\$4,356	\$4,291	
3	60	SBSOL-3-60	SBSOL-37	580	9.5	415	\$5,013	\$4,892	
3	60	SBTOL-3-60	SBTOL-55	470	9.2	450	\$6,810	\$6,689	
5	80	SBTOL-5-80	SBTOL-55	780	15.3	510	\$7,208	\$7,017	
7.5	80	SBTOL-7.5-80	SBTOL-75	770	22.9	550	\$10,272	\$9,467	
10	120	SBTOL-10-120	SBTOL-110	780	30.4	670	\$12,806	\$11,419	

COMPRESSED AIR SYSTEM with Refrigerated Dryer

35°F Dewpoint

HP	TANK		PUMP	RPM	CFM @		WT LBS.	1 PHASE	3 PHASE	PL Adder
	GAL	MODEL			175 PSI	75 PSI				
1.5	80	CD-715-80	703	400	5.8	626	\$7,381	\$7,153	\$883	
2	80	CD-720-80	703	510	7.5	647	\$7,638	\$7,350	\$883	
3	80	CD-730-80	705	540	11.1	677	\$7,739	\$7,392	\$883	
5	80	CD-735-80	705	845	17.3	693	\$8,176	\$7,747	\$883	
5	120	CD-735-120	705	845	17.3	819	\$8,698	\$8,253	\$883	
5	80	CD-737-80	707	455	18.5	822	\$11,189	\$10,673	\$1,223	
5	120	CD-737-120	707	455	18.5	953	\$11,711	\$11,179	\$1,223	
7 1/2	80	CD-745-80	707	655	26.9	828		\$10,991	\$1,223	
7 1/2	120	CD-745-120	707	655	26.9	955		\$11,495	\$1,223	
10	80	CD-755-80	707	850	34.4	932		\$12,604	\$1,223	
10	120	CD-755-120	707	850	34.4	1053		\$13,111	\$1,223	
10	120	CD-451012	4500	605	38.0	1361		\$14,561	\$1,617	
15	120	CD-451512	4500	830	51.0	1415		\$16,005	\$1,617	
15	240	CD-451524	4500	830	51.0	1911		\$17,336	\$1,617	
15	240	CD-91524	9000	480	61.2	2107		\$21,220	\$2,156	
20	240	CD-92024	9000	605	76.1	2149		\$21,863	\$2,156	
25	240	CD-92524	9000	710	89.6	2183		\$22,973	\$2,156	
30	200	CD-93024	9000	830	101.1	2204		\$23,841	\$2,156	

Note 1 - Standard features include belt guard mounted air-cooled after cooler, mechanical type auto tank drain, refrigerated air dryer with auto separator, and coalescing filter with auto drain.

Note 2 - Add PL prefix to model number to specify pressure lubrication (i.s. CD-PL-755-80)



Saylor-Beall Mfg. Co.
400 N. Kibbee St.
St. Johns, MI 48879
www.saylor-beall.com

Toll-free: 1-800-248-9001
Fax: 1-989-224-8788

COMPRESSED AIR SYSTEM with Desiccant Dryer

150 psi Max Working Pressure ----- -40°F Dewpoint

HP	TANK		PUMP	RPM	CFM @		WT LBS.	PL	
	GAL	MODEL			175 PSI			1 PHASE	3 PHASE
1 1/2	80	CDD-715-80	703	400	5.8	626	\$10,862	\$10,849	\$883
2	80	CDD-720-80	703	510	7.5	647	\$11,004	\$10,939	\$883
3	80	CDD-730-80	705	540	11.1	677	\$11,068	\$10,946	\$883
5	80	CDD-735-80	705	845	17.3	693	\$12,059	\$11,868	\$883
5	120	CDD-735-120	705	845	17.3	819	\$12,562	\$12,371	\$883
5	80	CDD-737-80	707	455	18.5	822	\$14,977	\$14,786	\$1,223
5	120	CDD-737-120	707	455	18.5	953	\$15,485	\$15,294	\$1,223
7.5	80	CDD-745-80	707	655	26.9	828		\$15,013	\$1,223
7.5	120	CDD-745-120	707	655	26.9	955		\$15,519	\$1,223
10	80	CDD-755-80	707	850	34.4	932		\$16,300	\$1,223
10	120	CDD-755-120	707	850	34.4	1053		\$16,807	\$1,223
10	120	CDD-451012	4500	605	38.0	1361		\$18,357	\$1,617
15	120	CDD-451512	4500	830	51.0	1415		\$18,978	\$1,617
15	240	CDD-451524	4500	830	51.0	1911		\$20,826	\$1,617
15	240	CDD-91524	9000	480	61.2	2107		\$25,267	\$2,156
20	240	CDD-92024	9000	605	76.1	2149		\$27,090	\$2,156
25	240	CDD-92524	9000	710	89.6	2183		\$30,961	\$2,156
30	240	CDD-93024	9000	830	101.1	2204		\$31,829	\$2,156

Note 1 - Standard features include belt guard mounted air-cooled after cooler, mechanical type auto tank drain, desiccant air dryer with auto separator, and coalescing filter with auto drain.

Note 2 - Add PL prefix to model number to specify pressure lubrication (e.g. CDD-PL-755-80)



Saylor-Beall Mfg. Co.
400 N. Kibbee St.
St. Johns, MI 48879
www.saylor-beall.com

Toll-free: 1-800-248-9001
Fax: 1-989-224-8788

CLIMATE CONTROL SIMPLEX UNITS HORIZONTAL TANK MOUNTED

HP	Tank Gal	Model Number	Pump Model	Pump RPM	Pump CFM @ 100 PSI	WT LBS.	1 PHASE	3 PHASE
1/2	30	F-123-IC	F	470	1.7	197	\$2,400	\$2,400
1/2	60	F-126-IC	F	470	1.7	297	\$2,662	\$2,662
3/4	30	F-343-IC	F	700	2.7	197	\$2,485	\$2,485
3/4	60	F-346-IC	F	700	2.7	297	\$2,748	\$2,748
1	30	K-103-IC	K	540	3.9	224	\$2,950	\$2,902
1	60	K-106-IC	K	540	3.9	324	\$3,213	\$3,165
1 1/2	60	715-60-IC	703	435	6.6	511	\$3,696	\$3,680
1 1/2	80	715-80-IC	703	435	6.6	556	\$4,017	\$4,002
2	60	720-60-IC	703	540	8.3	532	\$3,840	\$3,774
2	80	720-80-IC	703	540	8.3	577	\$4,162	\$4,097
3	60	730-60-IC	705	575	12.3	554	\$3,904	\$3,783
3	80	730-80-IC	705	575	12.3	599	\$4,227	\$4,105
5	80	735-80-IC	705	850	18.3	570	\$4,303	\$4,112
5	120	735-120-IC	705	850	18.3	615	\$5,090	\$4,899
5	80	737-80-IC	707	515	22.2	707	\$6,860	\$6,669
5	120	737-120-IC	707	515	22.2	838	\$7,457	\$7,266
7 1/2	80	745-80-IC	707	730	31.2	713		\$6,903
7 1/2	120	745-120-IC	707	730	31.2	840		\$7,499
10	80	755-80-IC	707	850	36.6	733		\$7,354
10	120	755-120-IC	707	850	36.6	854		\$7,915
10	120	451012-IC	4500	665	41.8	1161		\$9,266
10	200	451020-IC	4500	665	41.8	1400		\$10,169
15	120	451512-IC	4500	830	52.2	1195		\$9,896
15	200	451520-IC	4500	830	52.2	1434		\$10,798
15	200	91520-IC	9000	550	72.1	1601		\$12,825
15	240	91524-IC	9000	550	72.1	1816		\$13,313
20	240	92024-IC	9000	665	86.1	1858		\$13,941
25	240	92524-IC	9000	780	101.6	1872		\$14,572
30	240	93024-IC	9000	830	104.5	1893		\$15,201



Saylor-Beall Mfg. Co.
400 N. Kibbee St.
St. Johns, MI 48879
www.saylor-beall.com

Toll-free: 1-800-248-9001
Fax: 1-989-224-8788

Climate Control SIMPLEX UNITS - TANK MOUNTED WITH REFRIGERATOR AIR DRYER

HP	Tank Gal	Model Number	Pump Model	Pump CFM @ RPM	100 PSI	WT. LBS.	1 PHASE	3 PHASE	Coalescing Filter (mtd)
1/2	30	F-123-ICD	F	470	1.7	263	\$4,643	\$4,643	\$341
1/2	60	F-126-ICD	F	470	1.7	323	\$4,968	\$4,968	\$341
3/4	30	F-343-ICD	F	700	2.7	280	\$4,702	\$4,702	\$341
3/4	60	F-346-ICD	F	700	2.7	380	\$5,053	\$5,053	\$341
1	30	K-103-ICD	K	540	3.9	294	\$5,235	\$5,187	\$341
1	60	K-106-ICD	K	540	3.9	394	\$5,585	\$5,537	\$341
1 1/2	80	715-80-ICD	703	435	6.6	626	\$6,073	\$6,058	\$341
2	80	720-80-ICD	703	540	8.3	647	\$6,215	\$6,150	\$341
3	80	730-80-ICD	705	575	12.3	677	\$6,554	\$6,433	\$341
5	80	735-80-ICD	705	850	18.3	693	\$7,296	\$7,105	\$370
5	120	735-120-ICD	705	850	18.3	819	\$7,962	\$7,770	\$370
5	80	737-80-ICD	707	515	22.2	822	\$9,875	\$9,684	\$370
5	120	737-120-ICD	707	515	22.2	953	\$10,538	\$10,347	\$370
7 1/2	80	745-80-ICD	707	730	31.2	828		\$10,416	\$370
7 1/2	120	745-120-ICD	707	730	31.2	955		\$11,084	\$370
10	80	755-80-ICD	707	850	36.6	932		\$11,538	\$370
10	120	755-120-ICD	707	850	36.6	1053		\$12,204	\$370
10	120	451012-ICD	4500	665	41.8	1361		\$12,065	\$507
15	120	451512-ICD	4500	830	52.2	1415		\$14,163	\$507



Saylor-Beall Mfg. Co.
400 N. Kibbee St.
St. Johns, MI 48879
www.saylor-beall.com

Toll-free: 1-800-248-9001
Fax: 1-989-224-8788

Climate Control DUPLEX UNITS - TANK MOUNTED

HP	Tank Gal	Model Number	Pump Model	Pump CFM @ RPM	100 PSI	WT LBS.	1 PHASE	3 PHASE
1/2	30	XF-123-IC	(2) F	470	3.4	270	\$5,787	\$5,787
1/2	60	XF-126-IC	(2) F	470	3.4	370	\$6,053	\$6,053
3/4	30	XF-343-IC	(2) F	700	5.4	272	\$6,102	\$6,102
3/4	60	XF-346-IC	(2) F	700	5.4	372	\$6,195	\$6,195
1	60	XK-106-IC	(2) K	540	7.8	424	\$7,086	\$6,990
1	80	XK-108-IC	(2) K	540	7.8	469	\$7,433	\$7,337
1 1/2	80	X-715-80-IC	(2) 703	435	13.6	970	\$9,171	\$8,904
1 1/2	120	X-715-120-IC	(2) 703	435	13.6	1095	\$9,742	\$9,474
2	80	X-720-80-IC	(2) 703	540	16.6	1008	\$9,372	\$9,012
2	120	X-720-120-IC	(2) 703	540	16.6	1133	\$9,943	\$9,582
3	80	X-730-80-IC	(2) 705	575	24.6	1072	\$9,562	\$9,100
3	120	X-730-120-IC	(2) 705	575	24.6	1197	\$10,133	\$9,671
5	80	X-735-80-IC	(2) 705	850	36.6	1078	\$9,862	\$9,299
5	120	X-735-120-IC	(2) 705	850	36.6	1203	\$10,432	\$9,870
5	120	X-737-120-IC	(2) 707	515	44.4	1403	\$13,474	\$12,912
5	200	X-737-200-IC	(2) 707	515	44.4	1605	\$14,428	\$13,865
7 1/2	120	X-745-120-IC	(2) 707	730	62.4	1415		\$13,784
7 1/2	200	X-745-200-IC	(2) 707	730	62.4	1617		\$14,739
10	120	X-755-120-IC	(2) 707	850	73.2	1428		\$15,841
10	200	X-755-200-IC	(2) 707	850	73.2	1634		\$16,794
10	200	X-451020-IC	(2) 4500	665	83.6	2445		\$22,316
10	240	X-451024-IC	(2) 4500	665	83.6	2680		\$23,237
15	200	X-451520-IC	(2) 4500	830	104.4	2513		\$23,574
15	240	X-451524-IC	(2) 4500	830	104.4	2748		\$24,492
15	240	X-91524-IC	(2) 9000	550	144.2	3316		\$27,618
20	240	X-92024-IC	(2) 9000	665	172.2	3456	Note 2	\$29,796
25	240	X-92524-IC	(2) 9000	780	203.2	3556	Note 2	\$31,059
30	240	X-93024-IC	(2) 9000	830	209.0	3758	Note 3	\$32,949

Note 1 - Price includes alternator control panel mounted and wired.
 Note 2 - Add \$1239.00 list for 230 volt.
 Note 3 - Add \$555.00 list for 230 volt.



Saylor-Beall Mfg. Co.
 400 N. Kibbee St.
 St. Johns, MI 48879
 www.saylor-beall.com

Toll-free: 1-800-248-9001
 Fax: 1-989-224-8788

Climate Control

DUPLEX UNITS - TANK MOUNTED WITH REFRIGERATED AIR DRYER

Effective Aug 16, 2021

HP	Tank Gal	Model Number	Pump Model	Pump CFM @		WT. LBS.	Coalescing Filter (mtd)	
				RPM	100 PSI		1 PHASE	3 PHASE
1/2	60	X-F-126-ICD	(2) F	470	3.4	436	\$7,976	\$7,976 \$341
3/4	60	X-F-346-ICD	(2) F	700	5.4	438	\$8,112	\$8,112 \$341
1	60	X-K-106-ICD	(2) K	540	7.8	497	\$9,017	\$8,921 \$341
1	80	X-K-108-ICD	(2) K	540	7.8	542	\$9,350	\$9,254 \$341
1 1/2	80	X-715-80-ICD	(2) 703	435	13.6	1035	\$11,220	\$10,955 \$341
1 1/2	120	X-715-120-ICD	(2) 703	435	13.6	1160	\$11,786	\$11,521 \$341
2	80	X-720-80-ICD	(2) 703	540	16.6	1073	\$11,426	\$11,064 \$341
2	120	X-720-120-ICD	(2) 703	540	16.6	1198	\$11,995	\$11,633 \$341
3	80	X-730-80-ICD	(2) 705	575	24.6	1137	\$11,890	\$11,429 \$370
3	120	X-730-120-ICD	(2) 705	575	24.6	1262	\$12,457	\$11,995 \$370
5	80	X-735-80-ICD	(2) 705	850	36.6	1175	\$12,194	\$11,631 \$370
5	120	X-735-120-ICD	(2) 705	850	36.6	1300	\$12,761	\$12,197 \$370

BASE MOUNTED UNITS

HP	Model Number	Pump Model	Pump CFM @		WT. LBS.	1 PHASE	3 PHASE
			RPM	100 PSI			
1/2	BF-120-IC	F	470	1.7	85	\$2,125	\$2,125
3/4	BF-340-IC	F	700	2.7	85	\$2,178	\$2,178
1	BK-100-IC	K	540	3.9	117	\$2,651	\$2,603
1 1/2	B-703-1-IC	703	435	6.6	350	\$3,610	\$3,595
2	B-703-2-IC	703	540	8.3	369	\$3,716	\$3,651
3	B-705-3-IC	705	575	12.3	383	\$3,882	\$3,761
5	B-705-5-IC	705	850	18.3	409	\$3,958	\$3,767
5	B-707-5-IC	707	515	22.2	474	\$5,990	\$5,799
7 1/2	B-707-7-IC	707	730	31.2	503		\$6,024
10	B-707-10-IC	707	850	36.6	517		\$7,050
10	B-45100-IC	4500	665	41.8	833		\$8,113
15	B-45150-IC	4500	830	52.2	867		\$8,742
15	B-9150-IC	9000	550	72.1	1050		\$10,767
20	B-9200-IC	9000	665	86.1	1101		\$11,396
25	B-9250-IC	9000	780	101.6	1115		\$12,028
30	B-9300-IC	9000	830	104.5	1136		\$12,655



Saylor-Beall Mfg. Co.
400 N. Kibbee St.
St. Johns, MI 48879
www.saylor-beall.com

Toll-free: 1-800-248-9001
Fax: 1-989-224-8788

Dur-o-line Series

Compressor pumps manufactured in Brazil, tank assembly by Saylor-Beall

Two Stage - Horizontal Tank Mounted - Electric

HP	TANK		PUMP	CFM @		
	SIZE	MODEL		175 PSI	1 PHASE	3 PHASE
5	60	DO560H	DOT5	16.0	\$3,259	\$3,066
5	80	DO580H	DOT5	16.0	\$3,566	\$3,373
7 1/2	80	CH-745-80	CH50	25.5	\$4,725	\$4,630
7 1/2	120	CH-745-120	CH50	25.5	\$5,454	\$5,359

Two Stage - Vertical Tank Mounted - Electric

HP	TANK		PUMP	CFM @		
	SIZE	MODEL		175 PSI	1 PHASE	3 PHASE
5	60	DO560V	DOT5	16.0	\$3,259	\$3,066
5	80	DO580V	DOT5	16.0	\$3,566	\$3,373
7 1/2	80	VT-CH-745-80	CH50	25.5	\$4,725	\$4,630
7 1/2	120	VT-CH-745-120	CH50	25.5	\$5,454	\$5,359

Two Stage - Horizontal Tank Mounted Gasoline Engine Driven

HP	TANK		PUMP	DLVD CFM	LIST
	SIZE	MODEL			PRICE
14	30	DO1330GH	DOT5	16.0 @ 140 PSI	\$4,272

Basic Pumps

HP RANGE	PUMP	CFM	NO. CYL.	LIST PRICE
	MODEL			
5	DOT5	16.00	2	\$1,887
7.5	CH50	25.5	2	\$2,141



Saylor-Beall Mfg. Co.
400 N. Kibbee St.
St. Johns, MI 48879
www.saylor-beall.com

Toll-free: 1-800-248-9001
Fax: 1-989-224-8788

ROTARY SCREW AIR COMPRESSORS

Base Mounted

MODEL	RSD-10	RSD-15	RSD-20	RSD-25	RSD-30	RSD-40	RSD-40-U	RSD-50-U
Motor HP	10	15	20	25	30	40	40	50
CFM	32	55	80	110	125	166	166	210
PSIG	125	125	125	125	125	125	125	125
List Price	\$11,054	\$17,582	\$18,696	\$20,260	\$23,663	\$23,615	\$29,142	\$33,850
OPTIONS								
200V	C/F	C/F	C/F	C/F	C/F	C/F	C/F	C/F
230V	\$0	\$0	\$0	\$0	\$0	\$855	\$855	\$448
460V	\$0	\$0	\$0	\$0	\$0	\$0	\$0	\$0
SPECIAL MOTORS								
TEFC	\$1,188	STD	STD	STD	STD	STD	STD	STD
Enclosure	\$1,463	\$4,006	\$4,006	\$4,006	\$4,007	\$4,007	\$4,909	\$4,909
AIR RECEIVERS								
80 Gallon	\$2,863	NA	NA	NA	NA	NA	NA	NA
120 Gallon*	\$3,136	\$3,136	\$3,136	\$3,136	\$3,136	NA	NA	NA
200 Gallon	\$4,227	\$4,227	\$4,227	\$4,227	\$4,227	\$4,227	NA	NA
240 Gallon	NA	N/A	N/A	N/A	N/A	\$4,363	NA	NA
*Not Available with Enclosure 15-25 HP								
LUBRICANTS								
Palasyn 45	STD	STD	STD	STD	STD	STD	STD	STD
AFX	\$158	\$331	\$331	\$331	\$331	\$401	\$401	\$401
SEP/TRAP	STD	\$539	\$539	\$539	\$539	\$611	\$611	\$611



Refrigerated Air Dryers

Effective Aug 16, 2021

MODEL	RATED CAPACITY (SCFM @ 100 PSI)	STANDARD VOLTAGE (1)	WT LBS.	LIST PRICE
SBX-0015	15	115-1	55	\$1,446
SBX-0020	20	115-1	62	\$1,452
SBX-0030	30	115-1	70	\$1,978
SBX-0045	45	115-1	77	\$2,444
SBX-0055	75	115-1	84	\$2,707
SBX-0085	85	115-1	92	\$3,300
SBX-0110	110	115-1	143	\$3,575
SBX-0135	125	115-1	143	\$3,888
SBX-0175	175	Specify	152	\$4,750
SBX-0215	215	Specify	196	\$6,127
SBX-0250	250	Specify	222	\$6,810
SBX-0340	340	Specify	253	\$7,780
SBX-0470	470	Specify	297	\$9,626

Specify voltage -230-1 or 460-3

High Inlet Temperature Refrigerated Air Dryers

MODEL	RATED CAPACITY (SCFM @ 125 SI)*	STANDARD VOLTAGE (1)	WT LBS.	LIST PRICE
SBR/HT-20	20	115-1	79	\$2,667
SBR/HT-25	25	115-1	80	\$2,816
SBR/HT-35	35	115-1	81	\$3,318
SBR/HT-50	50	115-1	150	\$4,235
SBR/HT-75	75	115-1	155	\$5,241
SBR/HT-125	125	230-1	175	\$9,011

*Capacity @ 180° F inlet temperature, 160° F inlet pressure dew point, 95° F ambient temperature, 50° outlet pressure dew point.

Belt Guard Mounted Air-Cooled Aftercoolers

with Unique Fan Design

MODEL	FOR USE WITH COMPRESSOR MODEL #	RATED CM CAPACITY	LIST PRICE
BGA-7-5	703-705	20	\$790
BGA-7-10	707	40	\$914
BGA-45-15	4500	60	\$1,034
BGA-90-20	9000	80	\$1,187
BGA-90-25	9000	100	\$1,374
BGA-90-30	9000	120	\$1,555

Condensate Cleaners

MODEL	RATED CAPACITY (1)	LIST PRICE
SBEP60 ST	60	\$247
SBEP120 ST	120	\$779
SBEP360 ST	360	\$1,118
SBEP900 ST	900	\$1,766



Saylor-Beall Mfg. Co.
400 N. Kibbee St.
St. Johns, MI 48879
www.saylor-beall.com

Toll-free: 1-800-248-9001
Fax: 1-989-224-8788

COMPRESSED AIR FILTER

Effective Aug 16, 2021

Separator Filter

MODEL	RATED CAPACITY (SCFM @ 100 PSIG)	Replacement Element	WT LBS.	AUTO PRICE	DIFF. DRAIN	GAUGE (2)	INSTALLATION
SBNF0015 GP	15	SBE0015GP	0.7	\$159	STD	STD	\$108
SBNF0030 GP	30	SBE0030GP	1.3	\$230	STD	STD	\$108
SBNF0050 GP	50	SBE0050GP	1.5	\$318	STD	STD	\$161
SBNF0085 GP	85	SBE0090GP	3.5	\$395	STD	STD	\$161
SBNF0090 GP	90	SBE0090GP	3.5	\$395	STD	STD	N/A
SBNF0135 GP	135	SBE0135GP	4.4	\$481	STD	STD	N/A
SBNF0175 GP	175	SBE0175GP	4.4	\$533	STD	STD	N/A
SBNF0290 GP	290	SBE0325GP	6.2	\$728	STD	STD	N/A
SBNF0400 GP	400	SBE0450GP	9.2	\$876	STD	STD	N/A
SBNF0700 GP	700	SBE0700GP	13.9	\$1,320	STD	STD	N/A

Coalescing Filter (Oil removal)

MODEL	RATED CAPACITY (SCFM @ 100 PSIG)	Replacement Element	WT LBS.	AUTO PRICE	DIFF. DRAIN	GAUGE (2)	INSTALLATION
SBNF0015 HE	15	SBE0015HE	0.7	\$159	STD	STD	\$108
SBNF0030 HE	30	SBE0030HE	1.3	\$230	STD	STD	\$108
SBNF0050 HE	50	SBE0050HE	1.5	\$318	STD	STD	\$161
SBNF0085 HE	85	SBE0090HE	3.5	\$395	STD	STD	\$161
SBNF0090 HE	90	SBE0090HE	3.5	\$395	STD	STD	N/A
SBNF0135 HE	135	SBE0135HE	4.4	\$481	STD	STD	N/A
SBNF0175 HE	175	SBE0175HE	4.4	\$533	STD	STD	N/A
SBNF0290 HE	290	SBE0325HE	6.2	\$728	STD	STD	N/A
SBNF0400 HE	400	SBE0450HE	9.2	\$876	STD	STD	N/A



Saylor-Beall Mfg. Co.
400 N. Kibbee St.
St. Johns, MI 48879
www.saylor-beall.com

Toll-free: 1-800-248-9001
Fax: 1-989-224-8788

Oil Vapor Adsorber Filter

MODEL	RATED CAPACITY (SCFM @ 100 PSIG)	Replacement Element	WT LBS.	AUTO PRICE	DIFF. DRAIN	GAUGE (2)	INSTALLATION
SBNF0015 AC	15	SBE0015AC	0.7	\$159	STD	STD	\$108
SBNF0030 AC	30	SBE0030AC	1.3	\$230	STD	STD	\$108
SBNF0050 AC	50	SBE0050AC	1.5	\$318	STD	STD	\$161
SBNF0085 AC	85	SBE0090AC	3.5	\$395	STD	STD	\$161
SBNF0090 AC	90	SBE0090AC	3.5	\$395	STD	STD	N/A
SBNF0135 AC	135	SBE0135AC	4.4	\$481	STD	STD	N/A
SBNF0175 AC	175	SBE0175AC	4.4	\$533	STD	STD	N/A
SBNF0290 AC	290	SBE0325AC	6.2	\$728	STD	STD	N/A
SBNF0400 AC	400	SBE0450AC	9.2	\$876	STD	STD	N/A
SBNF0700 AC	700	SBE0700AC	13.9	\$1,320	STD	STD	N/A

AUTOMATIC CONDENSATE DRAINS

Pneumatically Actuated

Top Connections

MODEL	RATED CAPACITY (PINTS/HOUR)	MAX. WORKING PRESSURE	INLET CONNECTIONS	WT LBS.	LIST (1) PRICE
SBPD-1	2.4	175	1/2" NPTF	2	\$176
SBPD-2	24.0	300	3/4" NPTF	8	\$429

Bottom Connections

1007	2.4	175	3/8" NPTF	1-1/2	\$463
SBPD-2BC	24.0	300	3/4" NPTF	1-1/2	\$515

Electrically Actuated

MODEL	RATED CAPACITY (PINTS/HOUR)	MAX. WORKING PRESSURE	INLET CONNECTIONS	WT LBS.	LIST (1) PRICE
SBED04-200	1800	200	1/2" NPTF	1-1/2	\$452
SBED04-300	1800	300	1/2" NPTF	1-1/2	\$632

(1) List Prices are for drain shipped loose. Add \$28 to list price for installation on tank.



Saylor-Beall Mfg. Co.
400 N. Kibbee St.
St. Johns, MI 48879
www.saylor-beall.com

Toll-free: 1-800-248-9001
Fax: 1-989-224-8788

PERFORMANCE PACKAGE - SIMPLEX

Includes aftercooler, starter, low oil control, auto tank drain, vibro isolators, new quite intake filter, dual control on 15-30 HP.

HP	Tank Gal	Model Number	Pump Model	CFM @ VOLTAGE	WT 175 PSI LBS.	PRESSURE		LUBE ADDER	
						1 PHASE	3 PHASE		
5	80	VT-735-80FP	705	All	17.3	648	\$5,666	\$5,475	\$883
5	80	735-80FP	705	All	17.3	612	\$5,666	\$5,475	\$883
7 1/2	80	VT-745-80	707	All	26.2	915	\$9,332	\$8,341	\$1,223
7 1/2	80	745-80FP	707	All	26.2	729	\$9,332	\$8,341	\$1,223
10	120	VT-755-120FP	707	All	34.4	935	\$11,421	\$9,639	\$1,223
10	120	755-120FP	707	All	34.4	871	\$11,421	\$9,639	\$1,223
15	120	451512FP	4500	All	51.0	1195		\$12,072	\$1,617
20	120	92012FP	9000	208/230	76.1	1404		\$15,679	\$2,156
20	120	92012FP	9000	460	76.1	1404		\$15,059	\$2,156
25	200	92520FP	9000	208/230	89.6	1657		\$17,154	\$2,156
25	200	92520FP	9000	460	89.6	1657		\$16,534	\$2,156
30	240	93024FP	9000	208/230	101.1	1893		\$18,687	\$2,156
30	240	93024FP	9000	460	101.1	1893		\$18,410	\$2,156

Please specify voltage with all orders

PERFORMANCE PACKAGE - DUPLEX INCLUDES ALTERNATOR CONTROL PANEL MOUNTED & WIRED

Includes aftercooler, starter, low oil control, auto tank drain, vibro isolators, new quite intake filter.

HP	Tank Gal	Model Number	Pump Model	CFM @ VOLTAGE	WT 175 PSI LBS.	PRESSURE		LUBE ADDER	
						1 PHASE	3 PHASE		
1.5	80	X-715-80-FP	703	All	11.6	970	\$11,098	\$10,831	\$1,766
2	80	X-720-80-FP	703	All	15.0	1008	\$11,297	\$10,935	\$1,766
3	80	X-730-80-FP	705	All	22.2	1072	\$11,480	\$11,019	\$1,766
5	120	X-735-120-FP	705	All	34.6	1203	\$12,315	\$11,752	\$1,766
7.5	120	X-745-120-FP	707	All	53.8	1400		\$15,732	\$2,446
10	120	X-755-120-FP	707	All	68.8	1428		\$17,693	\$2,446
15	200	X-451520-FP	4500	All	102.0	2513		\$25,523	\$3,234
20	200	X-92020-FP	9000	208/230	152.2	3221		\$32,549	\$4,312
20	200	X-92020-FP	9000	460	152.2	3221		\$31,310	\$4,312
25	200	X-92520-FP	9000	208/230	179.2	3331		\$33,762	\$4,312
25	200	X-92520-FP	9000	460	179.2	3331		\$32,523	\$4,312
30	240	X-93024-FP	9000	208/230	202.2	3521		\$36,524	\$4,312
30	240	X-93024-FP	9000	460	202.2	3521		\$35,968	\$4,312

Please specify voltage with all orders



Saylor-Beall Mfg. Co.
400 N. Kibbee St.
St. Johns, MI 48879
www.saylor-beall.com

Toll-free: 1-800-248-9001
Fax: 1-989-224-8788