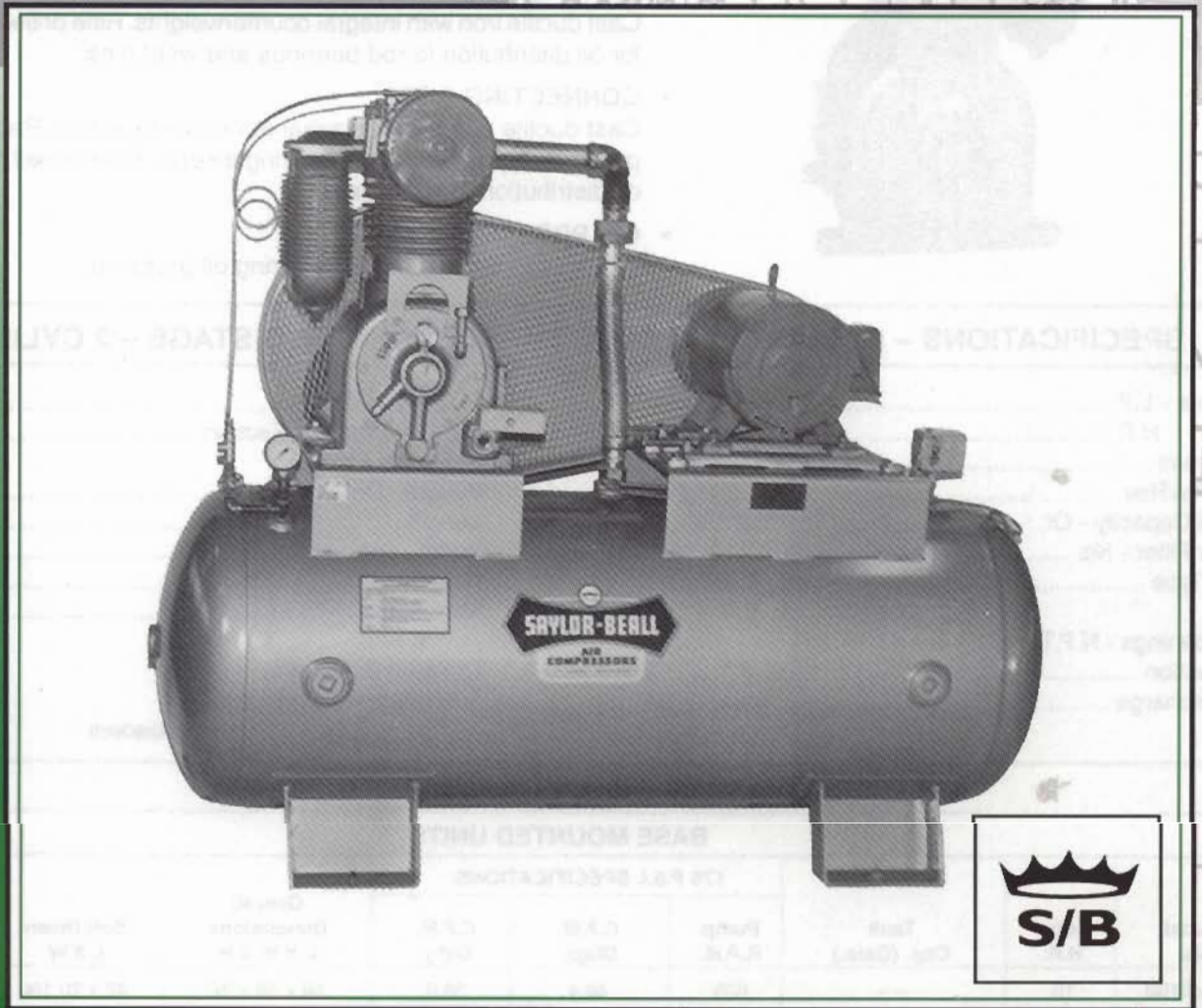


SAYLOR-BEALL

**Industrial Pressure Lubricated
PL4500 Series Air Compressors**



Saylor-Beall Manufacturing Company
P.O. Box 40, 400 N. Kibbee St., St. Johns, MI 48879
1-800-248-900 (USA) 517-224-2371 (MICH) 517-224-8788 (FAX)

Manufacturers of Air Compressors since 1915

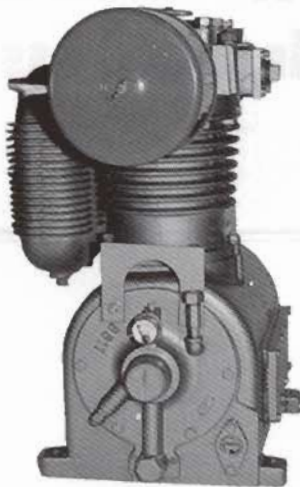
MODEL PL4500

15 HORSE POWER

TWO STAGE AIR COMPRESSOR

PRESSURE LUBRICATED

FEATURES



- **NEW DESIGN OIL PUMP**
Provides ample supply of oil to all wearing parts.
- **OIL SUMP FILTER**
Screen type filter easily removed for cleaning. Filters out dirt.
- **CRANKSHAFT**
Cast ductile iron with integral counterweights. Rifle drilled oil passages for oil distribution to rod bearings and wrist pins.
- **CONNECTING RODS**
Cast ductile iron with replaceable needle bearings. Replaceable precision type automotive bearing inserts. Rifle drilled passages for oil distribution to wrist pins.
- **OIL PRESSURE GAUGE**
Easily read dial type for monitoring oil pressure.

SPECIFICATIONS – PL4500 BASIC AIR COMPRESSOR – TWO STAGE – 2 CYLINDER

Bore - L.P.	6 1/8"	Flywheel O.D.	20"
H.P.	3 1/4"	V-Belts - No. and Section	2B
Stroke	4 1/2"	Basic Compressor	
CFM/Rev.07673	Weight - Dry, Lbs.	462
Oil Capacity - Qt.	4	Length	26 1/2
Air Filter - No.	1	Width	17 1/4
Type	Dry	Height	27
Openings - N.P.T.		Max. Press. (P.S.I.)	175
Suction	2"	Optional Equipment	
Discharge	1 1/4"	Oil Bath Air Cleaners	
		Constant Speed Head Unloaders	

START – STOP OPERATION

BASE MOUNTED UNITS

Model No.	Motor H.P.	Tank Cap. (Gals.)	175 P.S.I. SPECIFICATIONS			Overall Dimensions L X W X H	Bolt Down L X W	Net Wt. Lb. (Approx.)
			Pump R.P.M.	C.F.M. Displ.	C.F.M. Del'y.			
BPL45100	10	--	605	46.4	38.0	59 x 28 x 32	42 x 20 1/4	843
BPL45150	15	--	830	63.7	51.0	59 x 28 x 32	42 x 20 1/4	877

TANK MOUNTED UNITS

PL451012	10	120	605	46.4	38.0	75 x 29 x 56	40 x 19	1161
PL451020	10	200	605	46.4	38.0	75 x 30 x 63	40 x 19	1400
PL451512	15	120	830	63.7	51.0	75 x 29 x 56	40 x 19	1195
PL451520	15	200	830	63.7	51.0	78 x 30 x 63	40 x 19	1434

WARRANTY

SAYLOR-BEALL Manufacturing Company warrants its compressors and parts when properly installed, lubricated and maintained as recommended and in accordance with good industry practice to be free from defects in material and workmanship under normal use and service. The responsibility of the Company under this warranty is limited to repair or replacement, at the Company's factory, any compressor or part thereof, which shall, within one year after date of shipment to the original purchaser, be returned to the company and which, upon examination, shall be found to be defective to the satisfaction of the Company. This warranty shall not apply to compressors or parts which have been subjected to misapplication, misuse, negligence or accident, to compressors or parts which have been repaired or tampered with outside the Company's factory when in the judgment of the Company, it appears that the reliability or stability of the compressor or part has been effected. Ordinary maintenance, such as adjustment and cleaning of equipment or components is the responsibility of the owner. All transportation and shipping charges shall be paid by purchaser. This warranty does not apply to electric motors or gasoline engines. These are covered by the Original Manufacturer's Warranty and should be returned by the purchaser to their authorized station for service. This warranty is expressly in lieu of all other warranties (except of title) expressed or implied and of any other obligations or liability on the part of the Company. There are no warranties of merchantability or of fitness for a particular purpose.